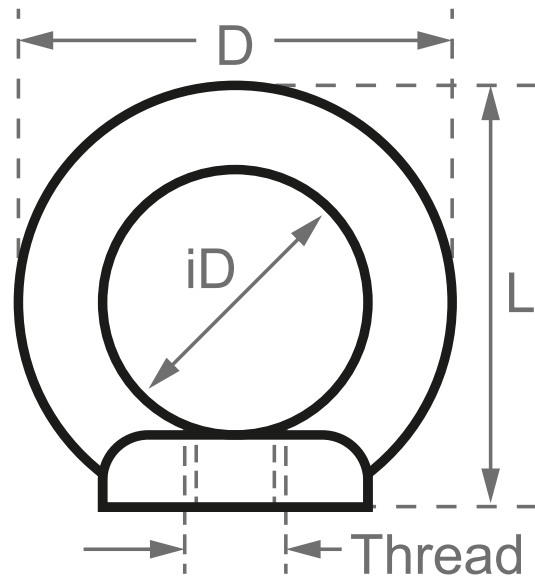


Lifting Eye Nut - CE Marked - DIN 582 - 316 Stainless Steel



Code	Thread (metric)	iD (mm)	D (mm)	L (mm)	WLL (kg)	Working Load Limit
EN-M6-WLL	M6	16	28	31	75	
EN-M8-WLL	M8	20	36	36	140	
EN-M10-WLL	M10	25	45	45	230	
EN-M12-WLL	M12	30	54	53	340	
EN-M16-WLL	M16	35	63	62	700	
EN-M20-WLL	M20	40	72	71	1200	
EN-M24-WLL	M24	50	90	90	1800	
EN-M27-WLL	M27	60	108	109	2100	
EN-M30-WLL	M30	60	109	109	3200	
EN-M36-WLL	M36	70	126	128	4600	

A note about dimensional information

Please be aware that dimensions published on our site should be treated as indicative.

We publish dimensions to the best of our ability, however manufacturers can, from time to time, make small alterations to their designs.

If your dimensional criteria is critical please do contact us prior to making your purchase to let us know and we will do our best to fulfil your requirements.