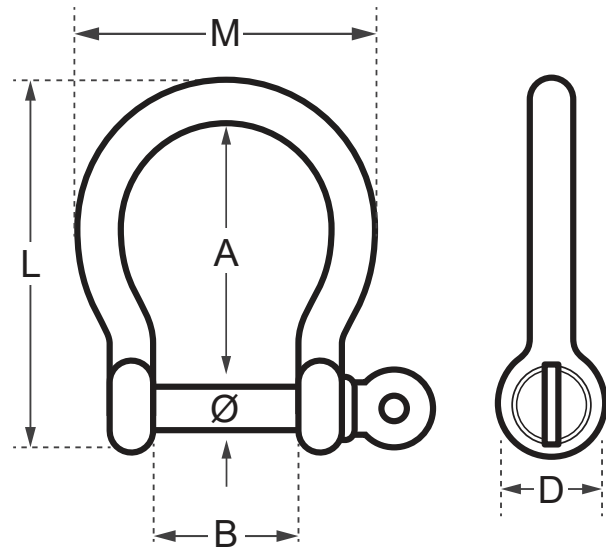


Wichard Bow Shackle - Self Locking Pin



Code	Ø (mm)	L (mm)	A (mm)	B (mm)	D (mm)	M (mm)	WLL (kg)	Working Load* (kg)	Break Load (kg)	Weight (kg)
WD-1241	4	29	18	8	8	21	140	320	700	0.009
WD-1242	5	36	23	10	10	25	200	400	1000	0.017
WD-1243	6	43	28	12	12	32	300	600	1600	0.030
WD-1244	8	56	37	16	16	39	540	1000	2700	0.068
WD-1245	10	72	47	20	20	52	860	1520	4300	0.137
WD-1246	12	87	55	24	24	63	1200	2080	6000	0.233
WD-1247	16	115	70	32	32	85	2000	3200	10000	0.540
WD-1248	20	140	80	40	49	100	3000	4500	15000	1.056

* Working Load refers to nautical applications.

Working Load Limit (WLL): for industrial applications only. WLL = 5:1 safety factor of the break load.

A note about dimensional information

Please be aware that dimensions published on our site should be treated as indicative.

We publish dimensions to the best of our ability, however manufacturers can, from time to time, make small alterations to their designs.

If your dimensional criteria is critical please do contact us prior to making your purchase to let us know and we will do our best to fulfil your requirements.