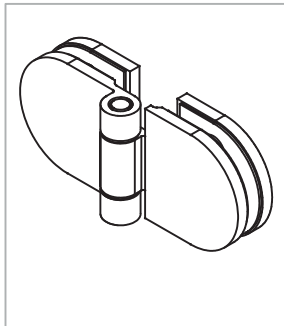
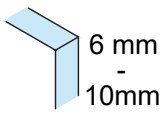
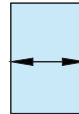

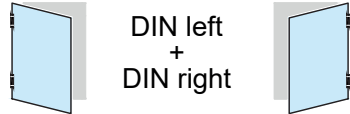
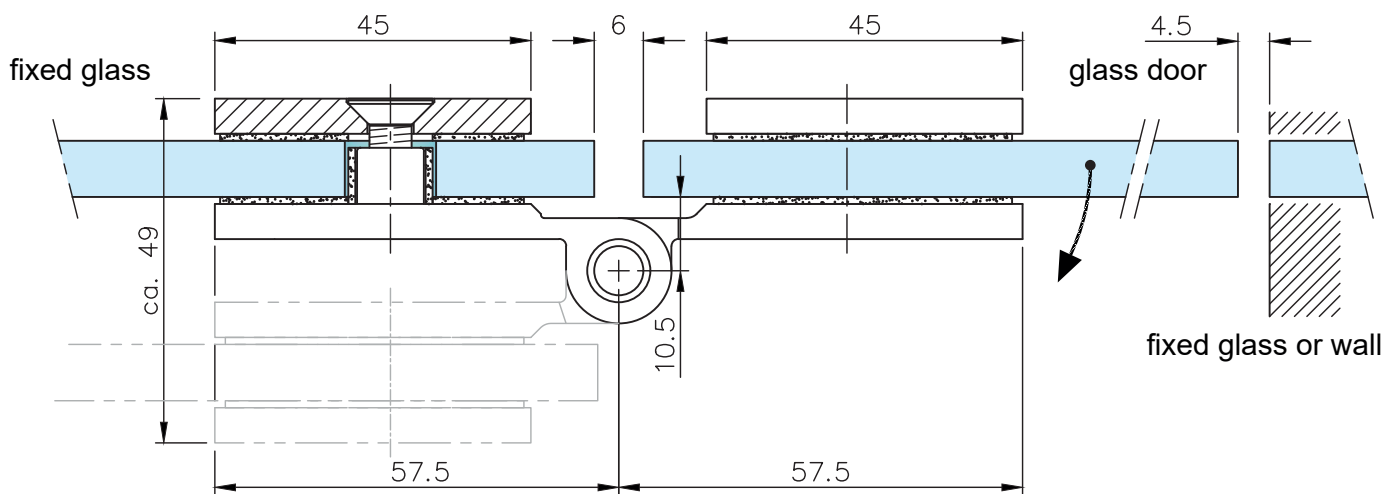
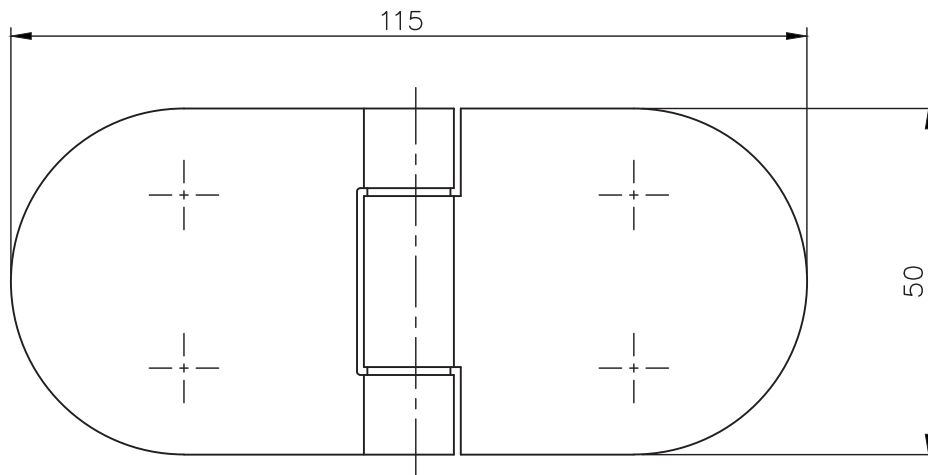


## Glass Door Hinge - Glass/Glass Fixing - D Shaped Profile



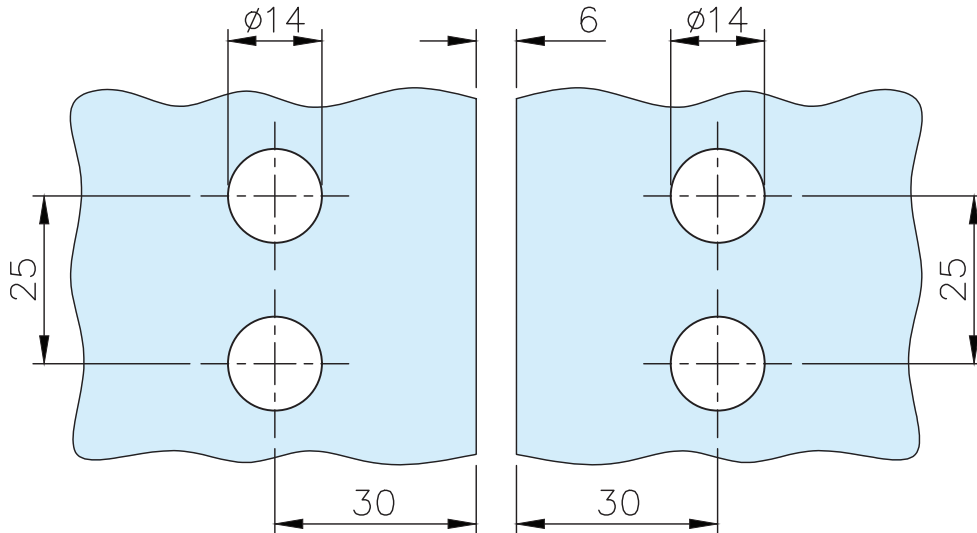
Options:	 6 mm - 10mm	 800 mm max.	 45 kg max.	 DIN left + DIN right
Material:	Stainless steel AISI 304		Weight: 0,423 kg	
Finish:	Stainless Steel Design <b>41.0201.000.12</b>	Anthracite Black Design <b>41.0201.000.26</b>	Chrome Design <b>41.0201.000.10</b>	



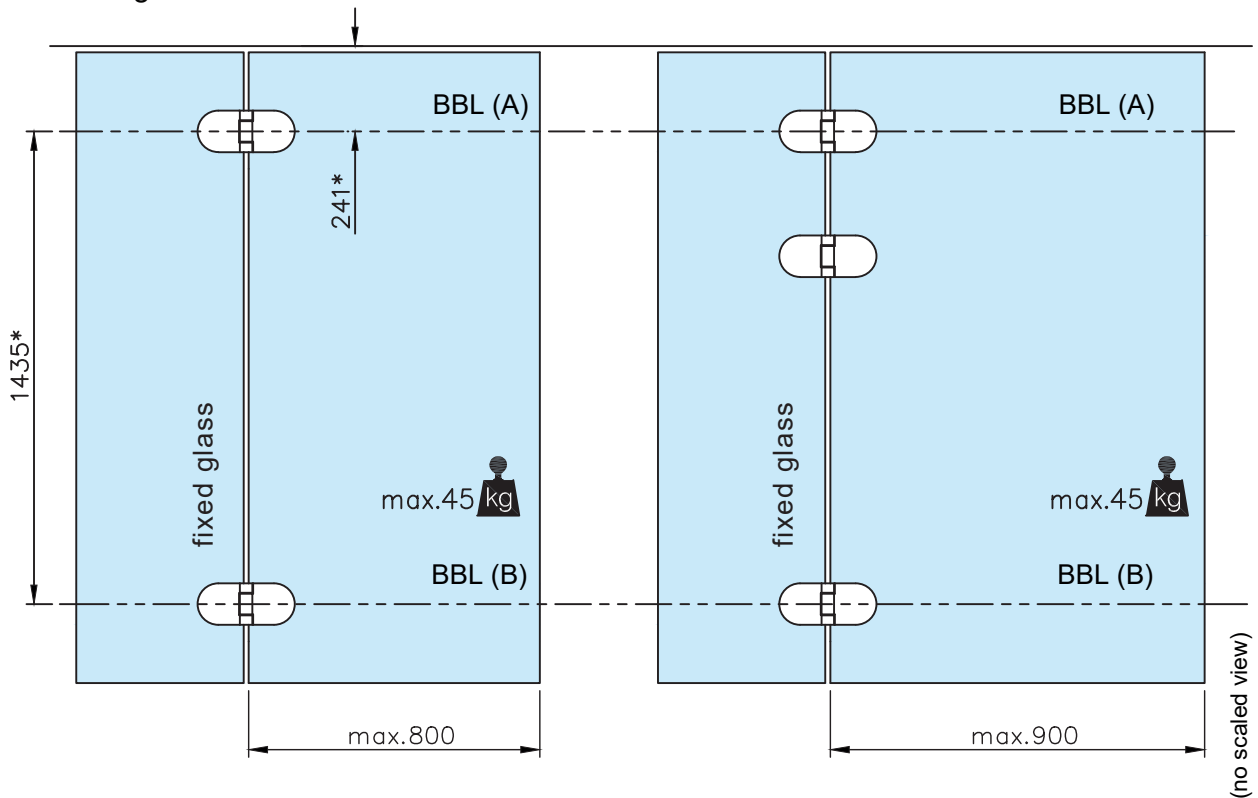
\* drawing shows 8mm glass

## Glass Door Hinge - Glass/Glass Fixing - D Shaped Profile

### Glass Cutout



### Max load weights and door width



Recommended dimensions according to *DIN 18268		
Glass door height	Distance frame rebate - BBL(A)	Distance BBL(A) - BBL(B)
1860 mm - 2110 mm	241 +1 mm	1435 mm ±0,5 mm
2111 mm - 2235 mm	241 +1 mm	1560 mm ±0,5 mm
2236 mm - 2360 mm	241 +1 mm	1685 mm ±0,5 mm