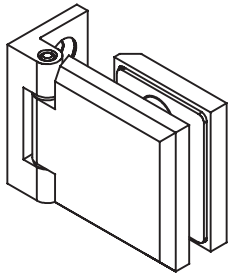
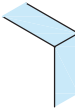
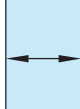

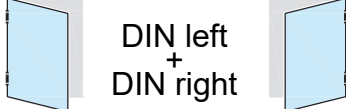


Glass Door Hinge - Glass/Wall Fixing - Square Profile



Options:  6mm
10mm  900mm
max  45 kg max.  DIN left
+
DIN right

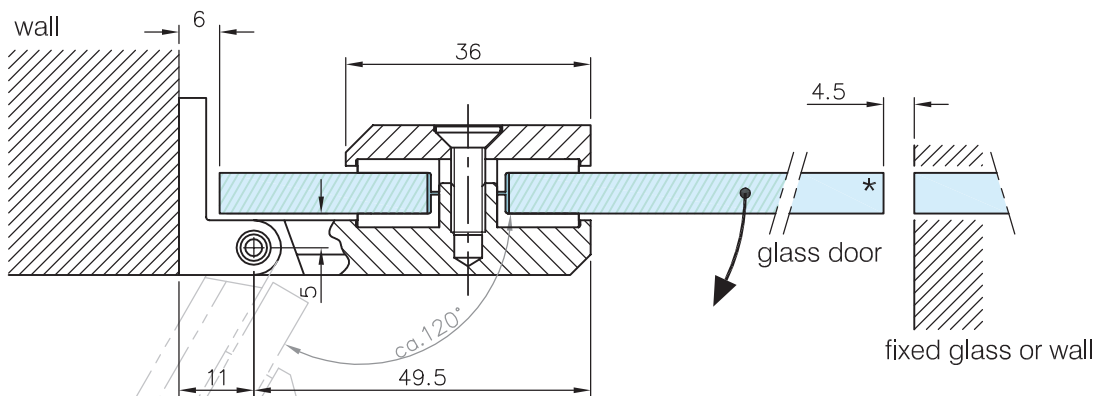
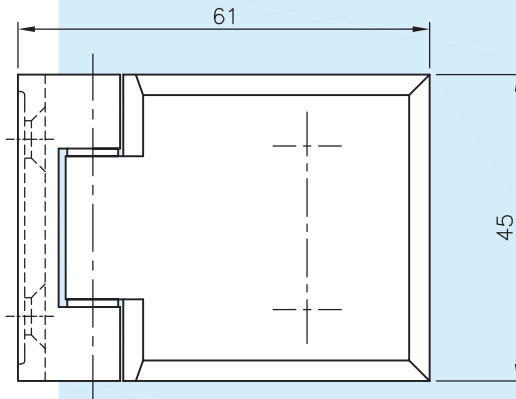
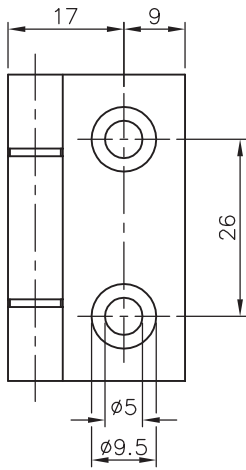
Material: Stainless steel AISI 304

Weight: 0,253 kg

Finish: Stainless steel design
41.0306.000.12

Anthracite black design
41.0306.000.26

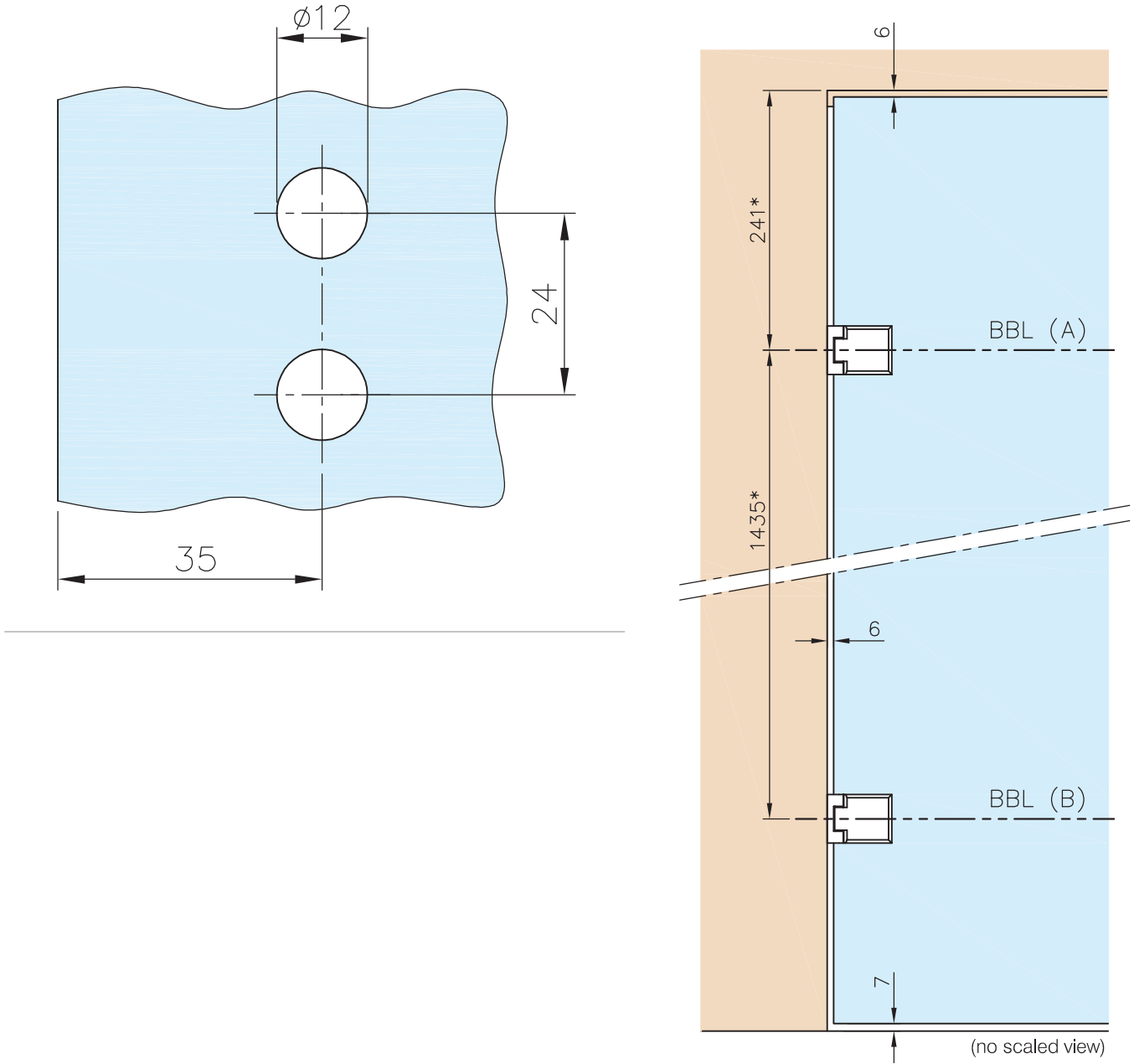
Chrome design
41.0306.000.10



* drawing shows 6mm glass

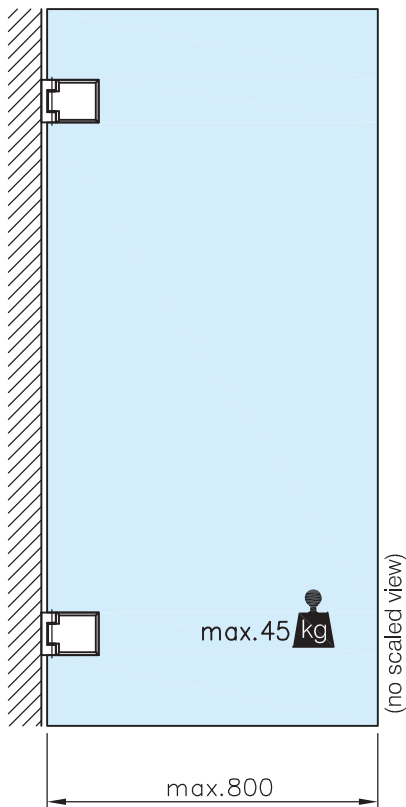
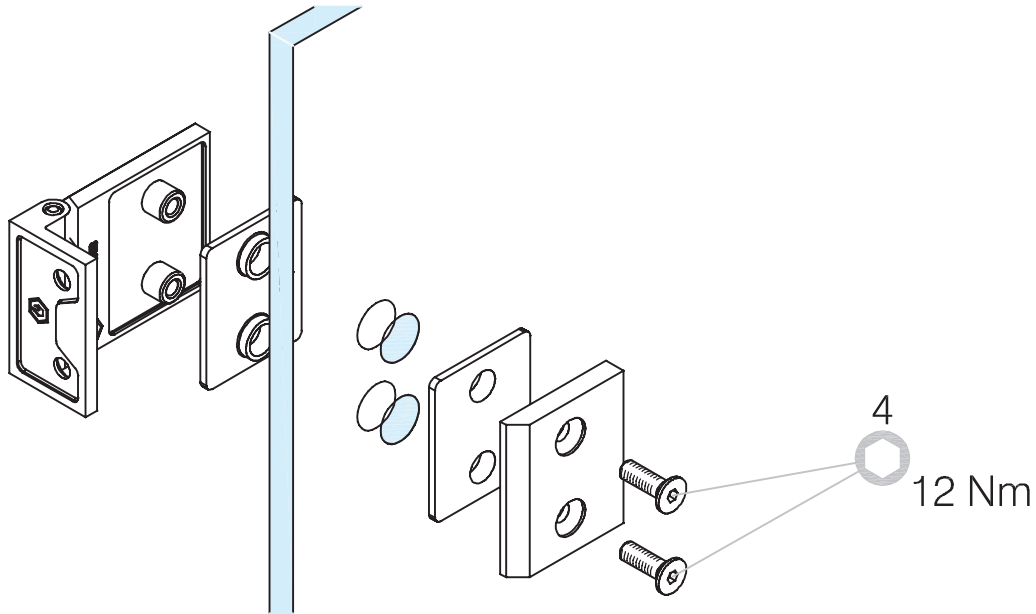
Glass Door Hinge - Glass/Wall Fixing - Square Profile

Glass preparation:



Recommended dimensions according to *DIN 18268		
Glass door height	distance frame rebate - BBL(A)	distance BBL(A) - BBL(B)
1860 mm - 2110 mm	241 +1 mm	1435 mm ±0,5 mm
2111 mm - 2235 mm	241 +1 mm	1560 mm ±0,5 mm
2236 mm - 2360 mm	241 +1 mm	1685 mm ±0,5 mm

Glass Door Hinge - Glass/Wall Fixing - Square Profile



max. load weights and door width

