

## Modular Balustrade Handrail Bracket Angled - Glass to Tube Mount

13.9350.042.12

A simple yet stylish solution for glass balustrade. This handrail bracket with angle stem is designed for glass fixing to support tubular balustrade.

Options available for 304 grade (interior) or 316 grade (exterior) stainless steel with a choice to fit either 42.4mm or 48.3mm balustrade railing together with a brushed 320 grit satin finish.

We recommend using a [M6 x 60 hex head cap screw](#) to attach your stainless steel railing. Use of a [C-Spanner](#) and [hex key](#) are required for installation.

Please note your glass will have to be drilled to accept this bracket.

### Modular DIY Range

Our most comprehensive and popular range of balustrade components. Produced from high quality 304 or 316 grade stainless steel. All the fittings in this range are based upon a wall thickness of 2.6mm ensuring that your installation is of the highest quality and will stand the test of time.

### Product Information

#### Available Options

Grade: 304 (interior) stainless steel.

Grade: 316 (interior) stainless steel.

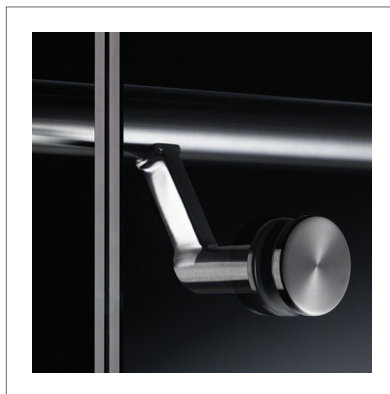
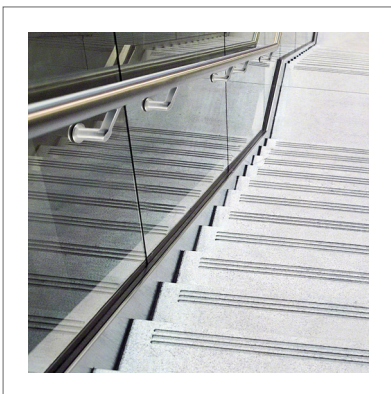
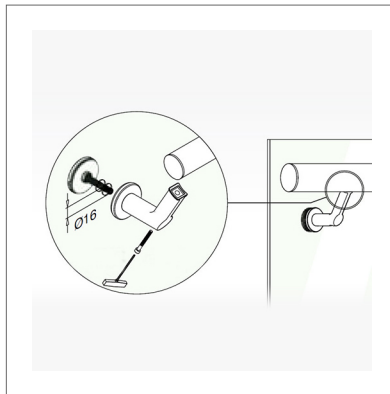
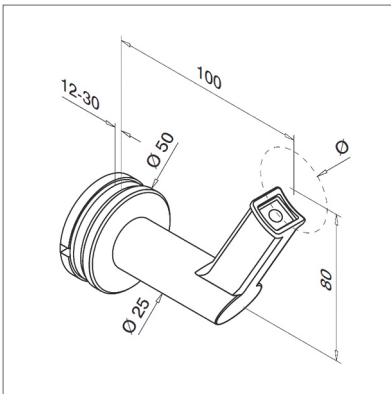
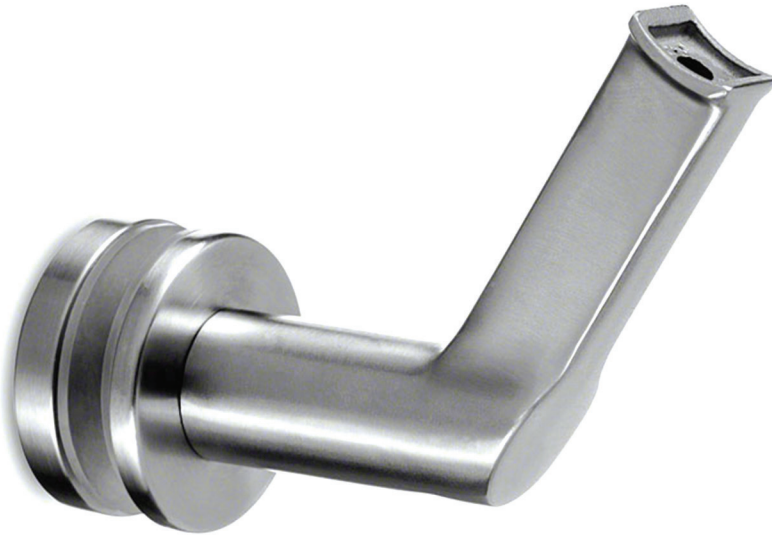
To Fit: 42.4mm diameter tube.

To Fit: 48.3mm diameter tube.

Stand Off: 100mm.

Disc Diameter: 50mm.

To a brushed 320 grit satin finish.













## Modular Balustrade Handrail Bracket Angled - Glass to Tube Mount

13.9350.042.12

### Key Features

-  Manufactured from 304 grade stainless steel.
-  Manufactured from 316 grade stainless steel.
-  To fit 42.4mm diameter stainless steel tube.
-  To fit 48.3mm diameter stainless steel tube.
-  To a brushed 320 grit satin finish.
-  Selection of fitting options available.
-  Requires the use of a hex head key for installation.
-  C-Spanner required for installation.

### Care Instructions



We recommend you should treat your stainless steel balustrade on a regular basis to ensure long-lasting perfection. Using either WD-40 or a specialist chemical stainless steel cleaner to remove heavy dirt and rust stains.

**Q-Ultra-Clean** rebuilds and strengthens the passive layer of stainless steel.

### Design

You can send us your drawings, technical drawings or even a freehand sketch.

From this we'll produce an accurate quotation for you. This service is completely free with no hassle or obligation.

Give us a call for any advice Monday to Friday 9.00am to 5.00pm

Contact us

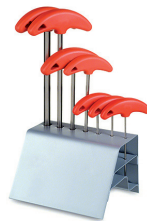
Email: [info@s3i.co.uk](mailto:info@s3i.co.uk)

Telephone: **01302 752 504**

Fax: **01302 752 410**



For attaching stainless steel handrail we recommend using a **M6 X 60 hex head cap screw**.



Use of a **hex head key** is required for installation.



Use of a **C-Spanner** is required for installation.