

## Cable Display Kit - Ceiling to Wall Mount

**Important:** Check that ceilings and mounting surfaces are strong enough to take the weight of the items being displayed.

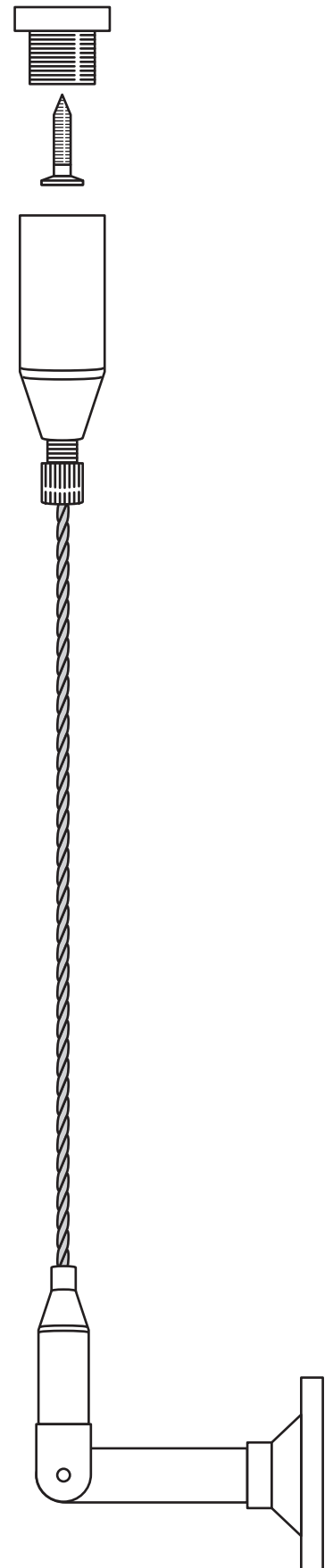
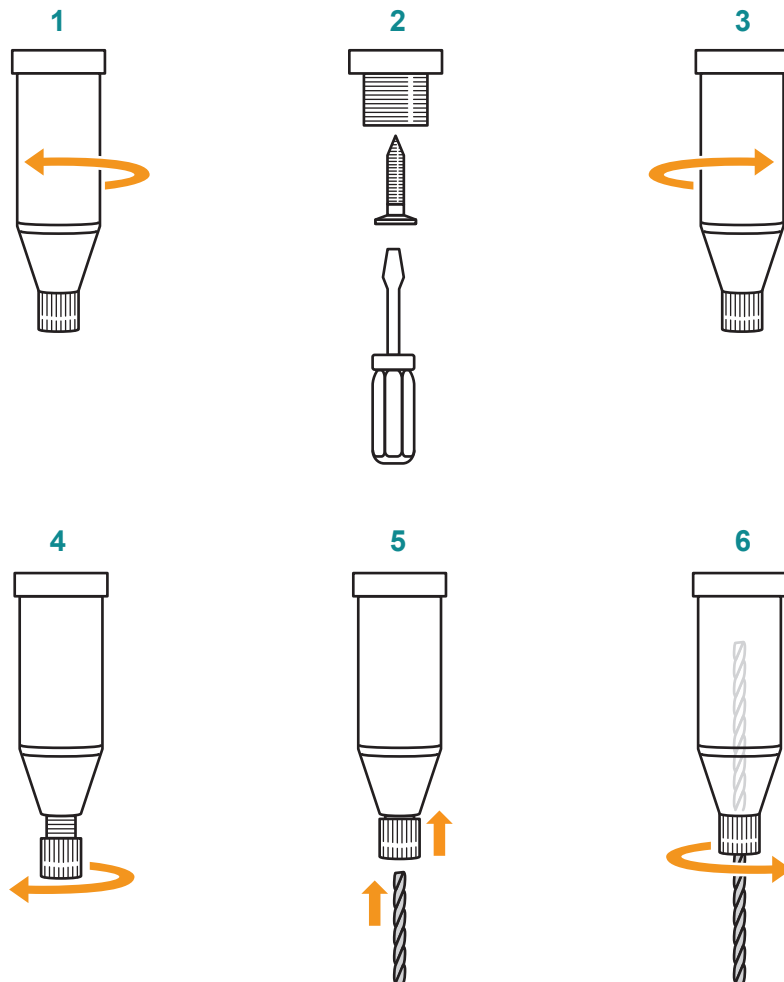
We recommend marking the position of the top tensioner first and using a plumb line to mark the position for the bottom tensioner

For wood mounting you can direct mount using countersunk screws.  
 For solid walls use a plastic/rawl plug to hold your screws firmly in place.

**Note:** Screw fixings not included with wall bracket tensioner.

### Ceiling Mount Cable Tensioner

1. Unscrew the main body from the threaded mounting block.
2. Secure the threaded mounting block in place with the screw provided.
3. Replace main body onto the threaded mounting block.
4. Unscrew the end fitting.
5. Press the end fitting towards the body and insert wire rope firmly until it locks in place.
6. To fully secure the wire tighten the end screw back towards the main body.



## Cable Display Kit - Ceiling to Wall Mount

### Wall Bracket Tensioner

1. Use suitable no.6 countersunk screws to secure bracket base plate to mounting surface.
2. Unscrew the end fitting.
3. Press the end fitting towards the body and insert wire rope firmly until it locks in place.
4. To fully secure the wire, screw the end fitting back towards the main body.

