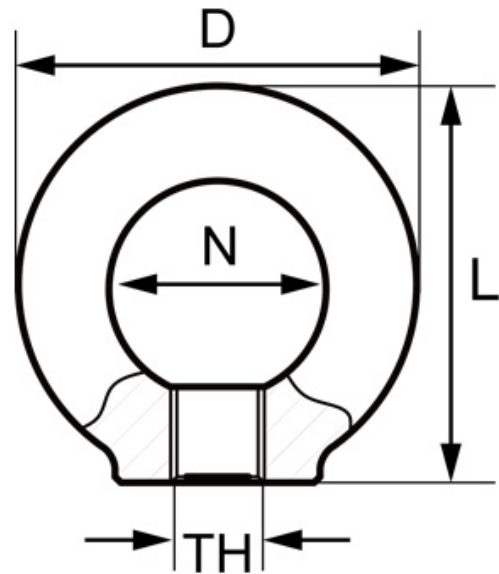


## Lifting Eye Nut - Grade 80

Fatigue rated x 1.5 WLL for 20,000 cycles  
 Proof Tested - 2.5 times working load limit  
 100% Magnaflux crack detected  
 Super alloy steel - Grade 80  
 Safety factor 4.1

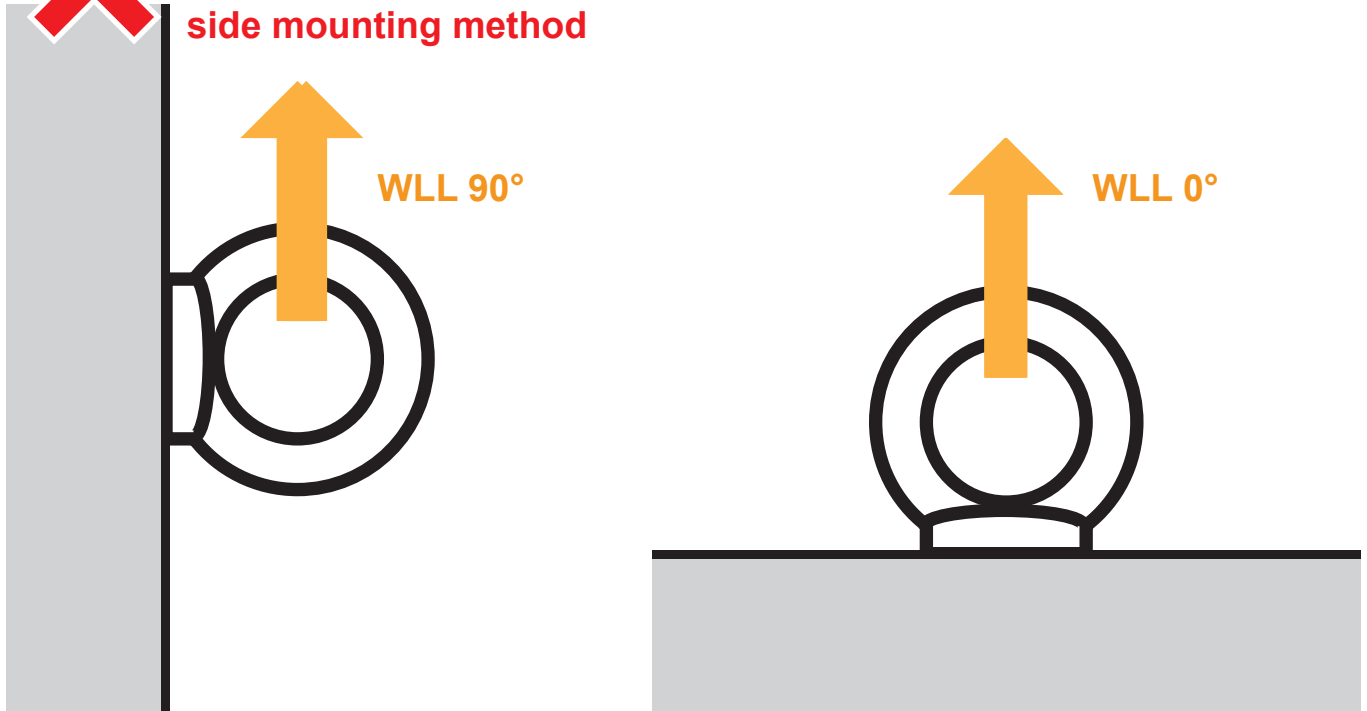


Part Code	Thread (TH)	Weight kg	WLL (T) 0°	WLL (T) 90°	D	L	N
XN055-M06	M6	0.049	0.4	0.15	36	20	36
XN055-M08	M8	0.05	1	0.4	36	20	36
XN055-M10	M10	0.09	1	0.4	45	25	45
XN055-M12	M12	0.16	2	0.75	54	30	53
XN055-M16	M16	0.24	4	1.5	63	35	62
XN055-M20	M20	0.36	6	2.3	72	40	71
XN055-M24	M24	0.72	8	3.2	90	50	90
XN055-M30	M30	1.32	12	4.5	108	60	109
XN055-M36	M36	2.08	16	7	126	70	128
XN055-M42	M42	3.11	24	9	144	80	147
XN055-M48	M48	5.02	32	12	166	90	168

## Lifting Eye Nut - Grade 80



We do not recommend side mounting method



Size	1 Point 0° (T)	1 Point 90° (T)	2 Point 0° (T)	2 Points 90° (T)	2 Points 0-45° (T)	2 Points 45-60° (T)	3/4 Points 0-45° (T)	3/4 Points 45-60° (T)	3/4 Points Unsym° (T)
M6	0.4	0.15	0.8	0.3	0.21	0.15	0.32	0.23	0.15
M8	1	0.4	2	0.8	0.56	0.4	0.84	0.6	0.4
M10	1	0.4	2	0.8	0.56	0.4	0.84	0.6	0.4
M12	2	0.75	4	1.5	1.05	0.75	1.58	1.13	0.75
M16	4	1.5	8	3	2.1	1.5	3.15	2.25	1.5
M20	6	2.3	12	4.6	3.22	2.3	4.83	3.45	2.3
M24	8	3.2	16	6.4	4.48	3.2	6.72	4.8	3.2
M30	12	4.5	24	9	6.3	4.5	9.5	6.8	4.5
M36	16	7	32	14	9.8	7	14.7	10.5	7
M42	24	9	48	18	12.6	9	18.9	13.5	9
M48	32	12	64	24	16.8	12	25.2	18	12