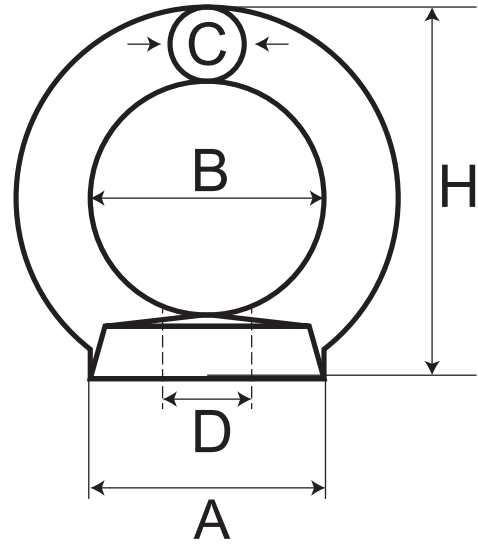


Eye Nut - 316 Grade Stainless Steel



Code	D (mm)	C (mm)	B (mm)	A (mm)	H (mm)
EN-M6	M6	6	16	16	31
EN-M8	M8	8	20	19	36
EN-M10	M10	10	25	24	45
EN-M12	M12	12	30	28.5	53
EN-M16	M16	14	35	33.8	60
EN-M20	M20	16	40	39	72
EN-M24	M24	20	50	46.6	90
EN-M30	M30	24	60	63.8	108

A note about dimensional information

Please be aware that dimensions published on our site should be treated as indicative.

We publish dimensions to the best of our ability, however manufacturers can, from time to time, make small alterations to their designs.

If your dimensional criteria is critical please do contact us prior to making your purchase to let us know and we will do our best to fulfil your requirements.