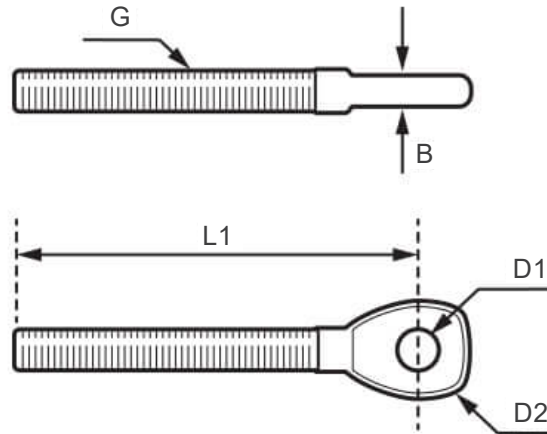


## Eye Stud - Metric Thread - 316 Stainless Steel



Code - Thread Type		G	D1 (mm)	D2 (mm)	L1 (mm)	B (mm)	Break Load (kg)
Right Hand	Left Hand						
ESM-M5	ESM-M5-L	M5	5.5	12	63	3	800
ESM-M6	ESM-M6-L	M6	6.5	14	65	4	1250
ESM-M8	ESM-M8-L	M8	8.5	17	78	5	2000
ESM-M10	ESM-M10-L	M10	10.5	22	90	6	3500
ESM-M12	ESM-M12-L	M12	13	25	110	8	5100
ESM-M14	ESM-M14-L	M14	13	28	124	9	5900
ESM-M16	ESM-M16-L	M16	14.5	31	133	10	8000
ESM-M20	ESM-M20-L	M20	19.5	40	164	15	13000
ESM-M22	ESM-M22-L	M22	23	46	196	18	17000
ESM-M24	ESM-M24-L	M24	26	53	230	20	20000
ESM-M27	ESM-M27-L	M27	28.5	65	247	25	25000
ESM-M30	ESM-M30-L	M30	33	70	274	30	31000
ESM-M36	ESM-M36-L	M36	36	80	295	30	43000

A note about dimensional information

Please be aware that dimensions published on our site should be treated as indicative.

We publish dimensions to the best of our ability, however manufacturers can, from time to time, make small alterations to their designs.

If your dimensional criteria is critical please do contact us prior to making your purchase to let us know and we will do our best to fulfil your requirements.