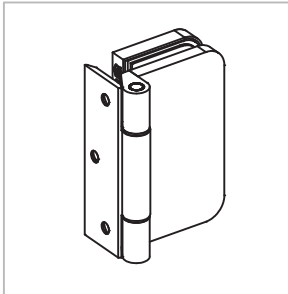
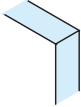
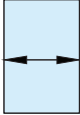

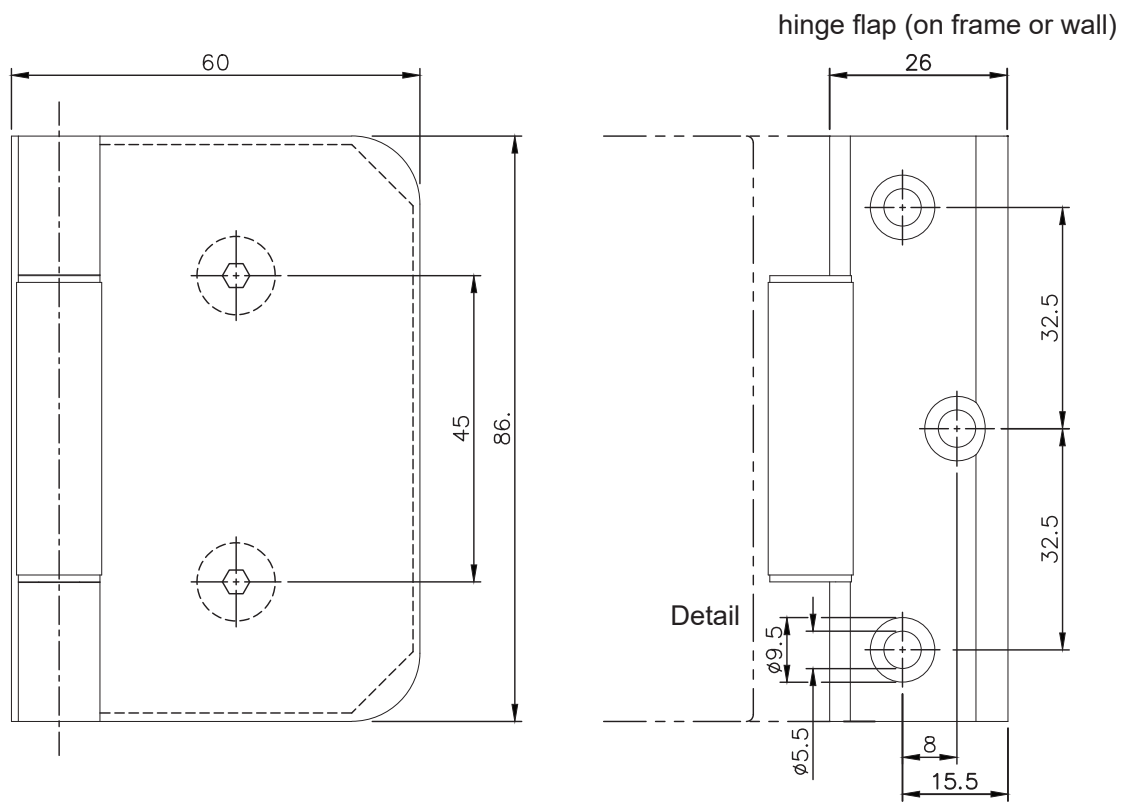


Glass Door Hinge - Rounded Corner

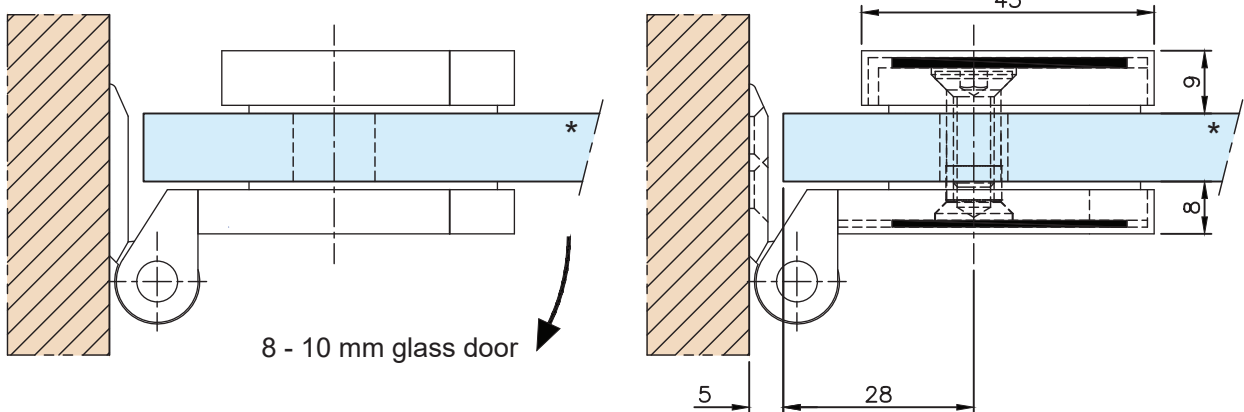
Stainless Steel Design
Silver Matt Anodised Finish
Anthracite Finish



Options:	 8 mm - 10 mm	 1000 mm max.	 50 kg max.
Material:	Aluminium	Weight:	0,225 kg
Finish:	Stainless steel design	Anthracite design	silver matt anodized



door frame

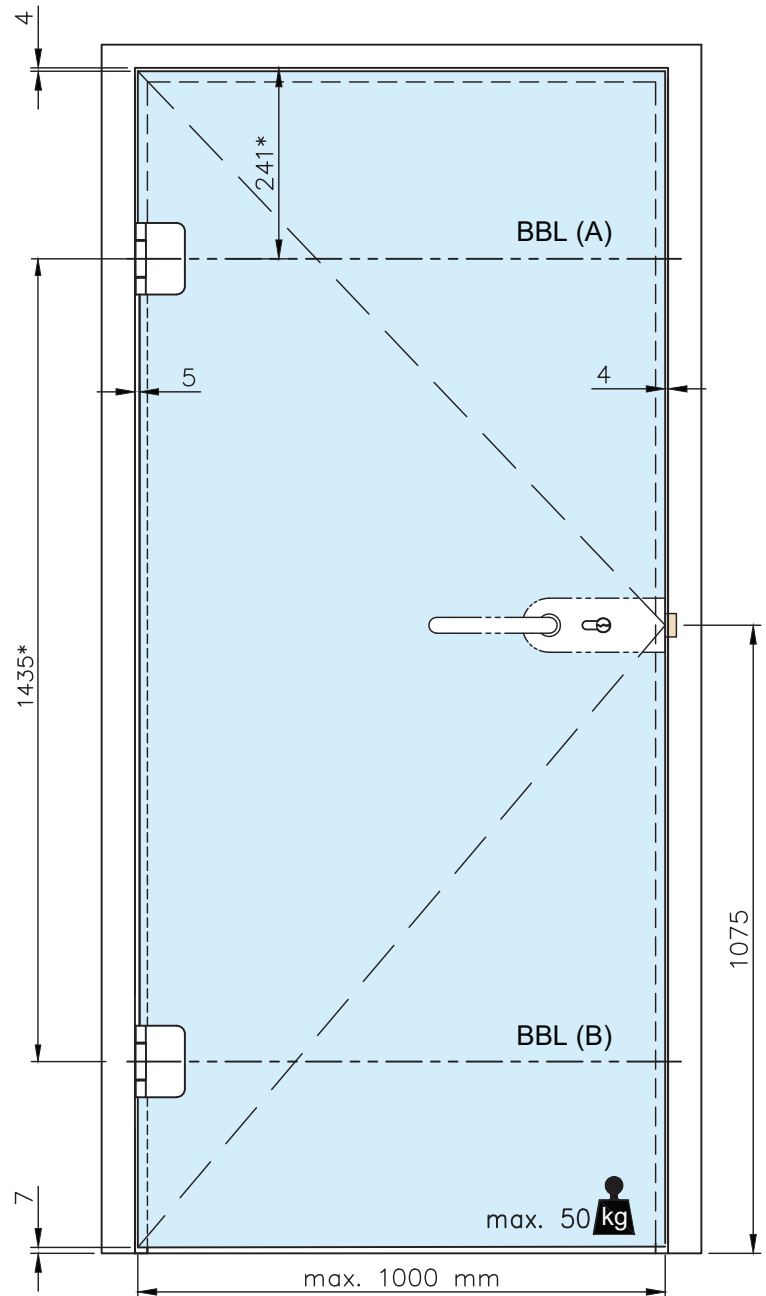
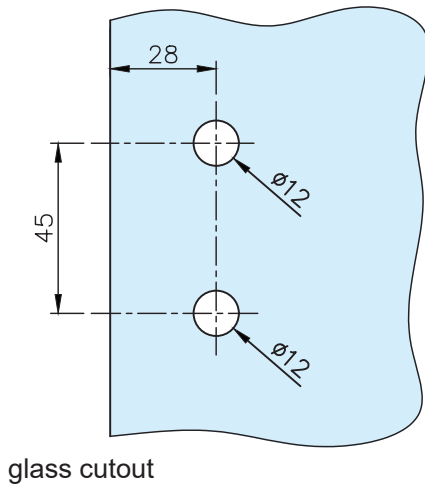


8 - 10 mm glass door

* drawing shows 10 mm glass

Glass Door Hinge - Rounded Corner

Stainless Steel Design
Silver Matt Anodised Finish
Anthracite Finish



Empfehlungsmaße entsprechend *DIN 18268

Glass door height	distance frame rebate - BBL(A)	distance BBL(A) - BBL(B)
1860 mm - 2110 mm	241 +1 mm	1435 mm $\pm 0,5$ mm
2111 mm - 2235 mm	241 +1 mm	1560 mm $\pm 0,5$ mm
2236 mm - 2360 mm	241 +1 mm	1685 mm $\pm 0,5$ mm

Glass Door Hinge - Rounded Corner

Stainless Steel Design
Silver Matt Anodised Finish
Anthracite Finish

