

## Glass Door Lock / Lever Handle Installation Example

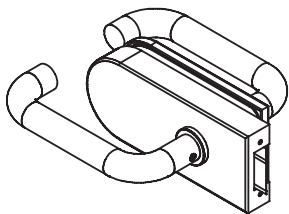
45.2210.001.12

Manual shows model 45.2210.002.12 - Left Hand Installation

45.2210.002.12

Installation instructions for Glass Door Lock with Lever Handle, These instruction can be applied to the fitting of Door Latch with lever handle (Model 45.2210.001.12)

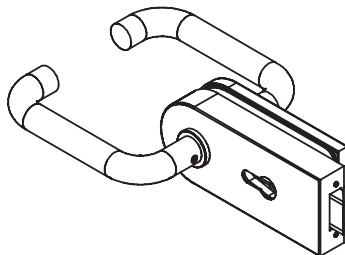
### Options:



45.2210.001.12

DIN LH + RH

Door Latch for Glass  
D Shape with  
Lever Handle



45.2210.002.12

DIN LH + RH

Glass Door Lock  
D Shape Back Plate  
and Lever Handle

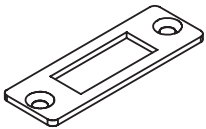
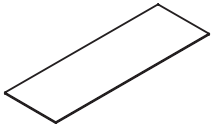



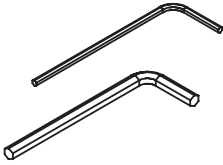



45.2212.000.12

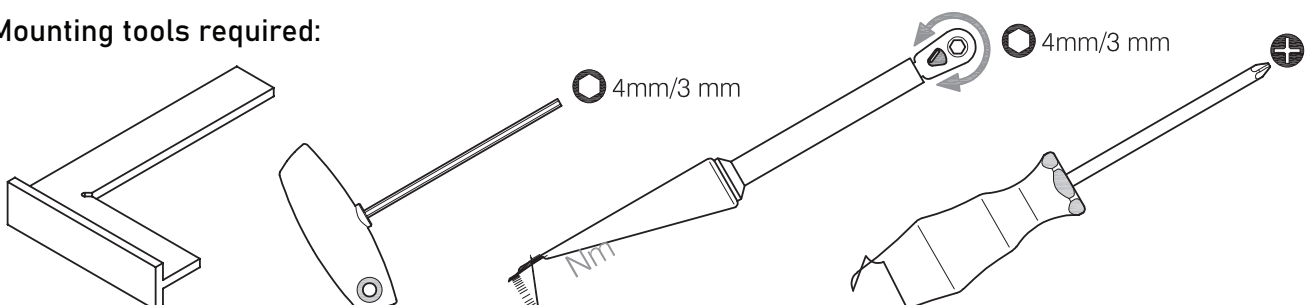
DIN LH + RH

Additional Strike Box Available

### Scope of supply

 Strike plate	 Cover stripe	 Handle guide rings for Ø16mm and Ø18mm	 Cover rings for Ø16mm und Ø18mm handles
 Mounting tool	 Allen key - 4mm/3mm and 2mm	 35mm Profile cylinder screw (only incl. in art. 45.2210.x02.xx and 45.2210.x03.xx)	

### Mounting tools required:



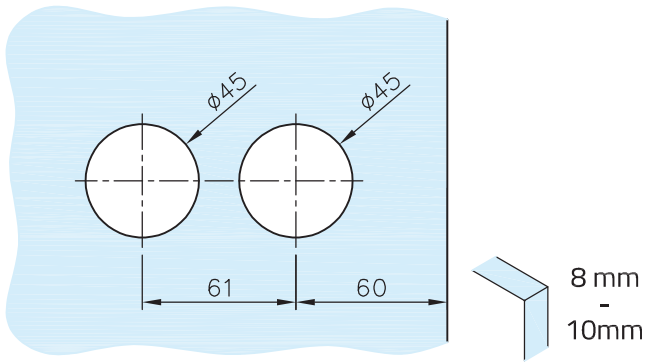
## Glass Door Lock / Lever Handle Installation Example

Manual shows model 45.2210.002.12 - DIN Left Hand Installation

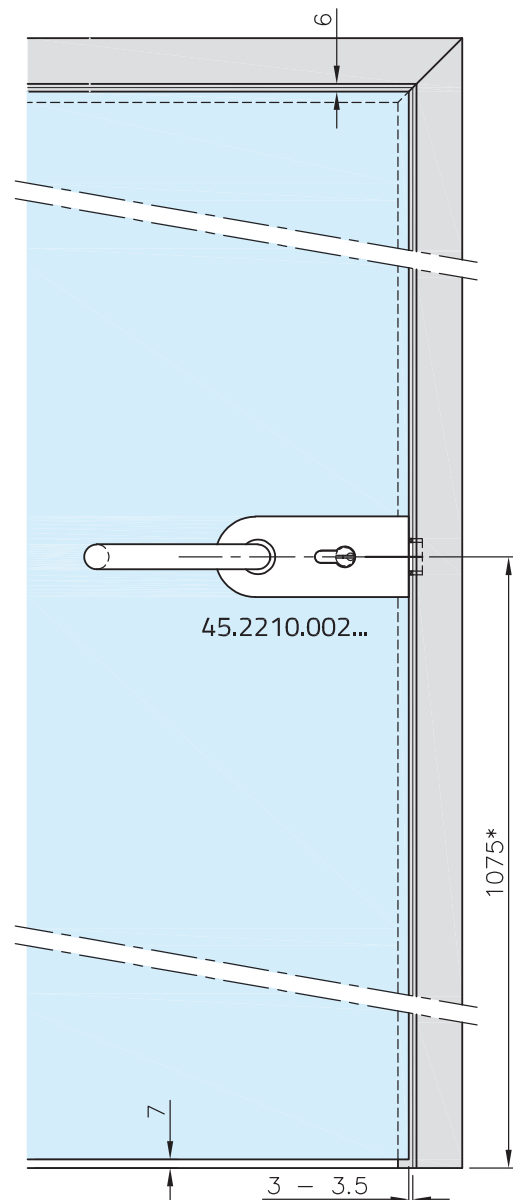
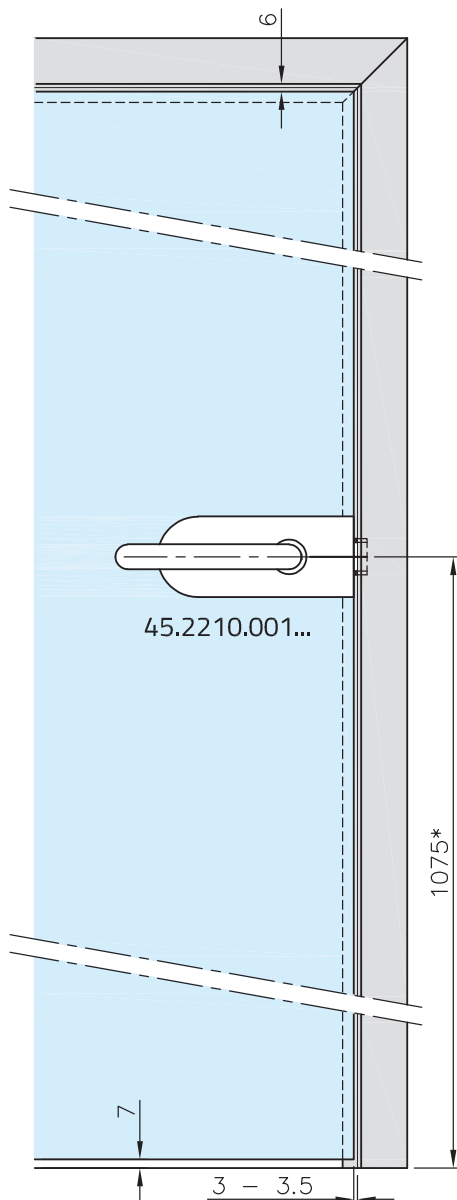
45.2210.001.12

45.2210.002.12

Glass preparation:



*Important:*  
The glass clamping area must be cleaned before installation.  
We recommend using glass cleaner  
(Do not use thinners/solvents!)



\*Recommended door handle height

## Glass Door Lock / Lever Handle Installation Example

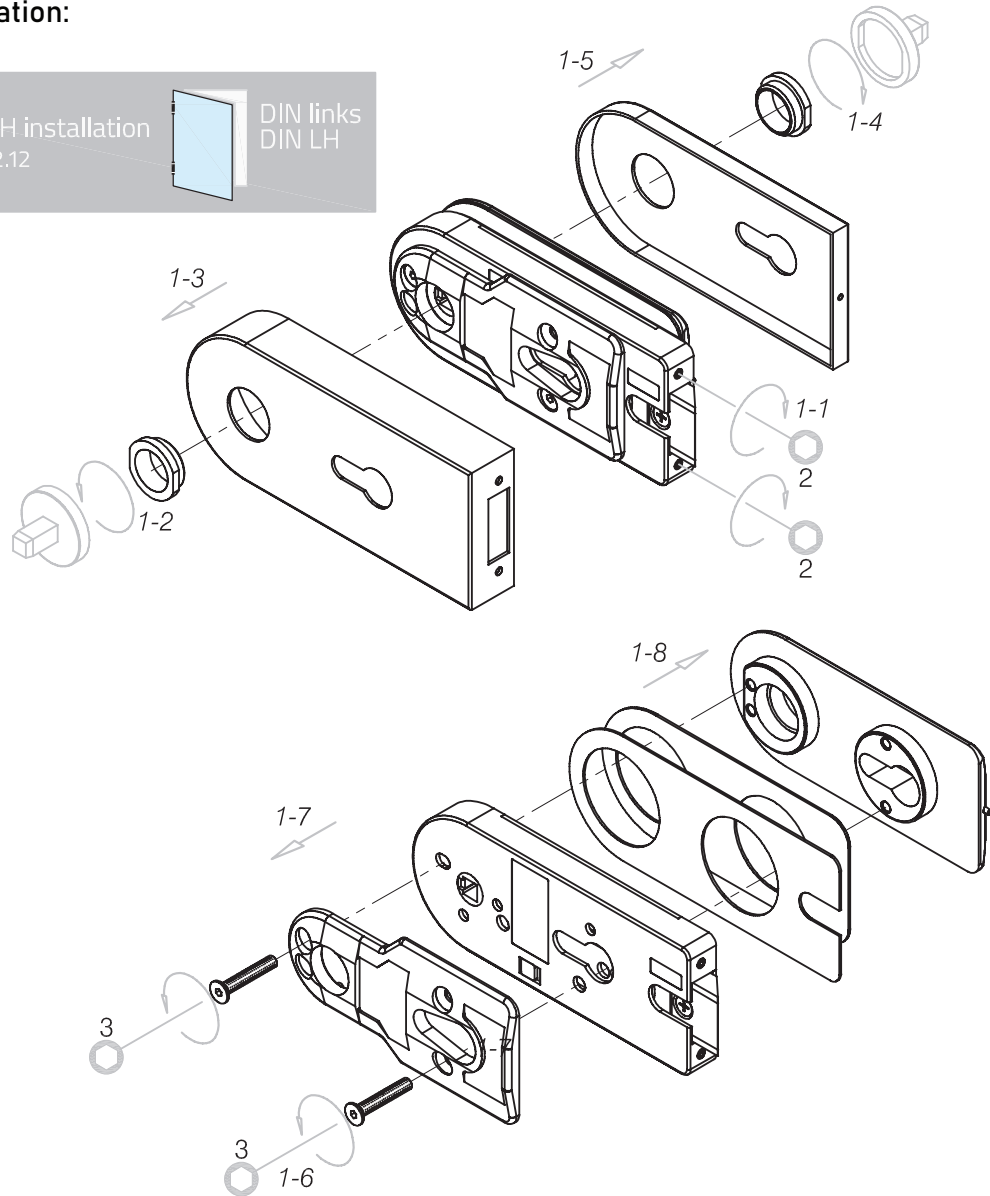
Manual shows model 45.2210.002.12 - DIN Left Hand Installation

45.2210.001.12

45.2210.002.12

### 1. Door lock preparation:

Manual shows DIN LH installation with model 45.2210.002.12



**!** Please attend the desired DIN direction and retrofit the latch if necessary.

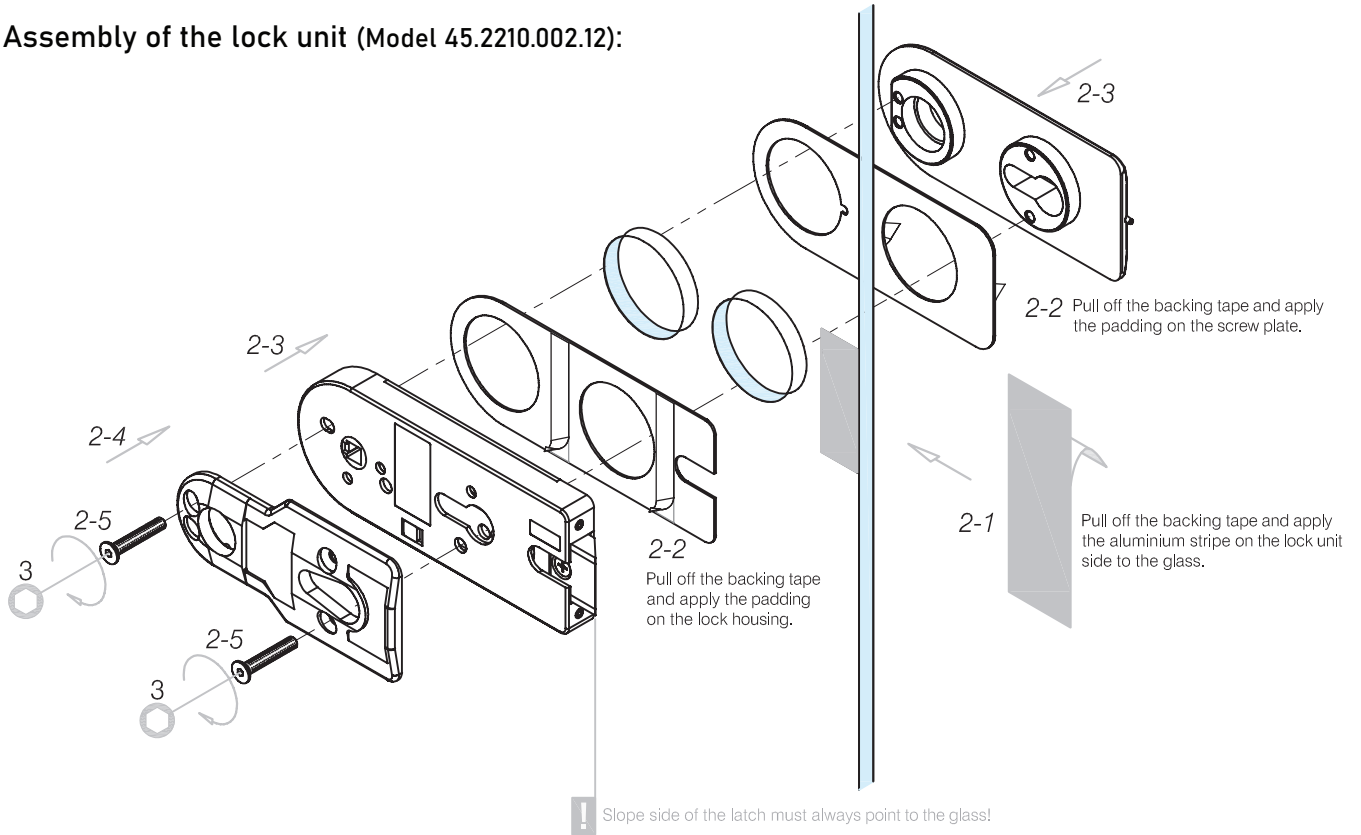
## Glass Door Lock / Lever Handle Installation Example

Manual shows model 45.2210.002.12 - DIN Left Hand Installation

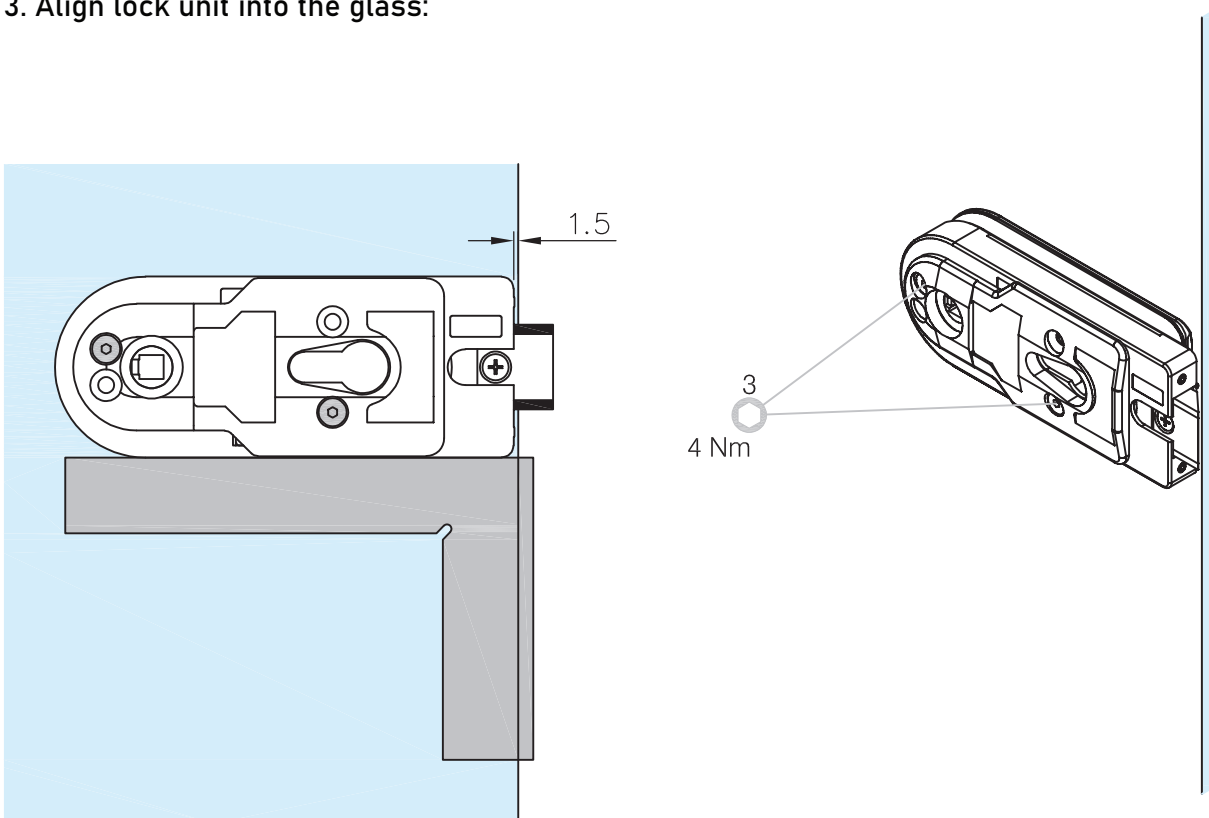
45.2210.001.12

45.2210.002.12

### 2. Assembly of the lock unit (Model 45.2210.002.12):



### 3. Align lock unit into the glass:



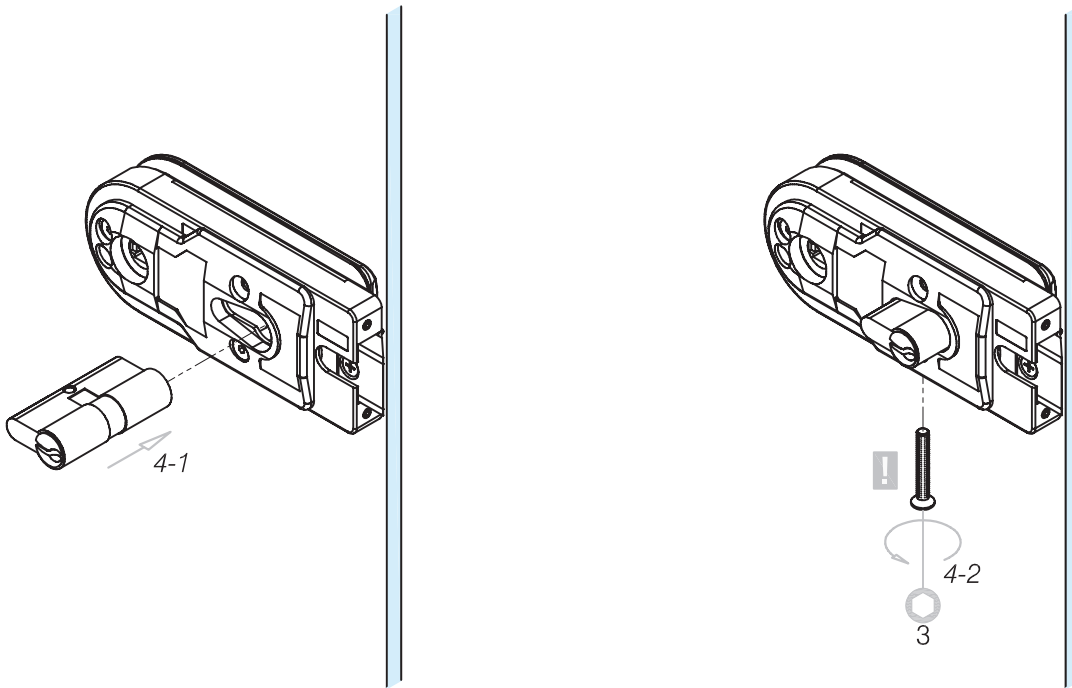
## Glass Door Lock / Lever Handle Installation Example

Manual shows model 45.2210.002.12 - DIN Left Hand Installation

45.2210.001.12

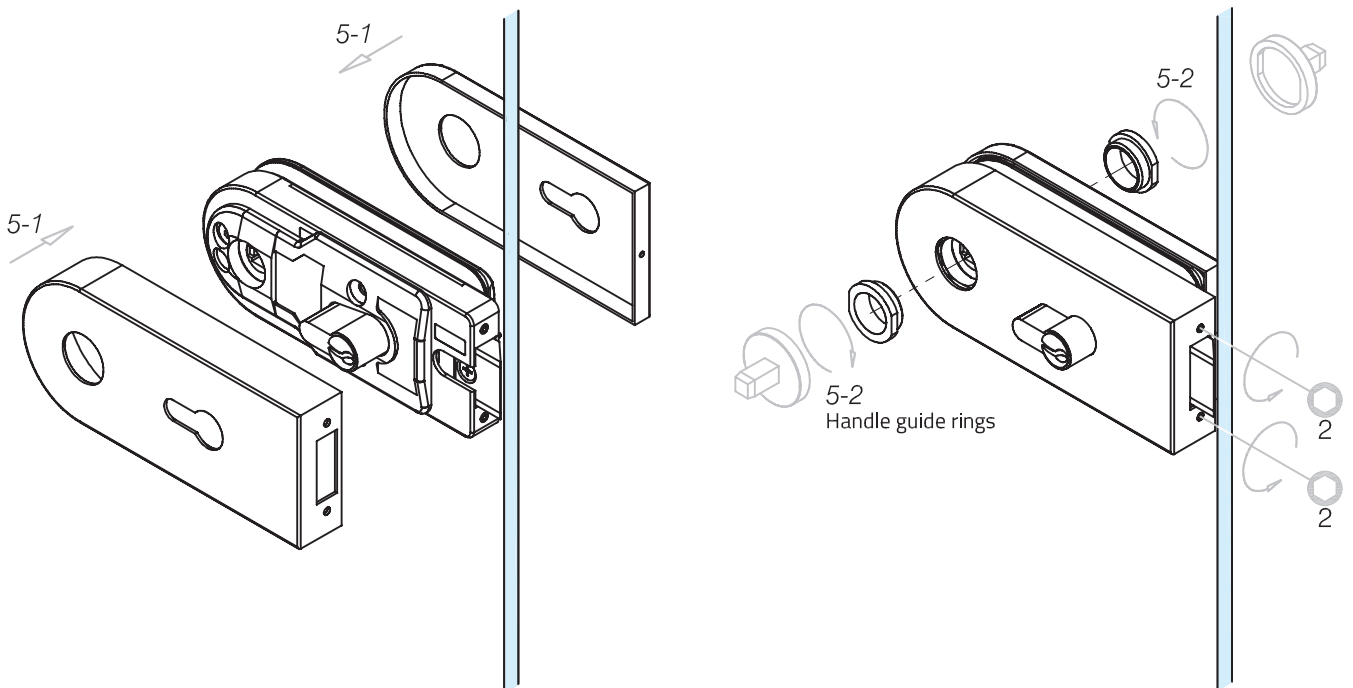
45.2210.002.12

### 4. Profile cylinder assembly (NOT INCLUDED in scope of supply)



 Screw length not longer than 35mm! (scope of supply)

### 5. Assembly of the cover caps



## Glass Door Lock / Lever Handle Installation Example

Manual shows model 45.2210.002.12 - DIN Left Hand Installation

45.2210.001.12

45.2210.002.12

### 6. Assembly of the lever handles

Lever handles are scope of supply

