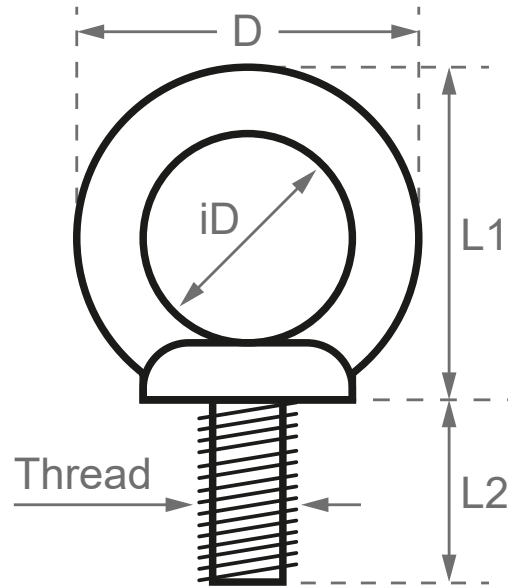


Lifting Eye Bolt - CE Marked - DIN 580 - 316 Stainless Steel



Code	Thread (metric)	iD (mm)	D (mm)	L1 (mm)	L2 (mm)	WLL (kg)	Working Load Limit
EB-M6-WLL	M6	20	36	36	13	75	
EB-M8-WLL	M8	20	36	36	13	140	
EB-M10-WLL	M10	25	45	45	17	230	
EB-M12-WLL	M12	30	54	53	21	340	
EB-M16-WLL	M16	35	63	62	27	700	
EB-M20-WLL	M20	40	72	71	30	1200	
EB-M24-WLL	M24	50	90	90	36	1800	
EB-M27-WLL	M27	60	108	109	45	2100	
EB-M30-WLL	M30	60	108	109	45	3200	
EB-M36-WLL	M36	70	126	128	54	4600	

A note about dimensional information

Please be aware that dimensions published on our site should be treated as indicative.

We publish dimensions to the best of our ability, however manufacturers can, from time to time, make small alterations to their designs.

If your dimensional criteria is critical please do contact us prior to making your purchase to let us know and we will do our best to fulfil your requirements.