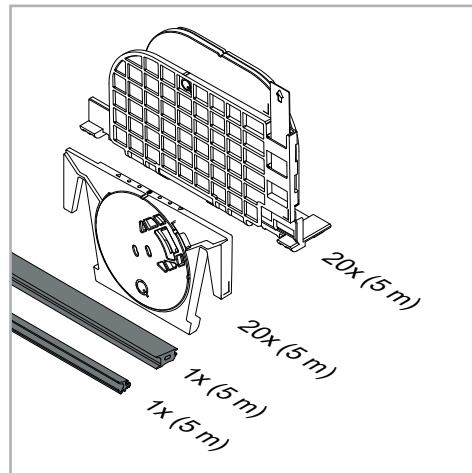


Q-Disc Set - Easy Glass Smart+ Balustrade



1

Insert the inlay into Easy Glass Smart+ floor profile.

2

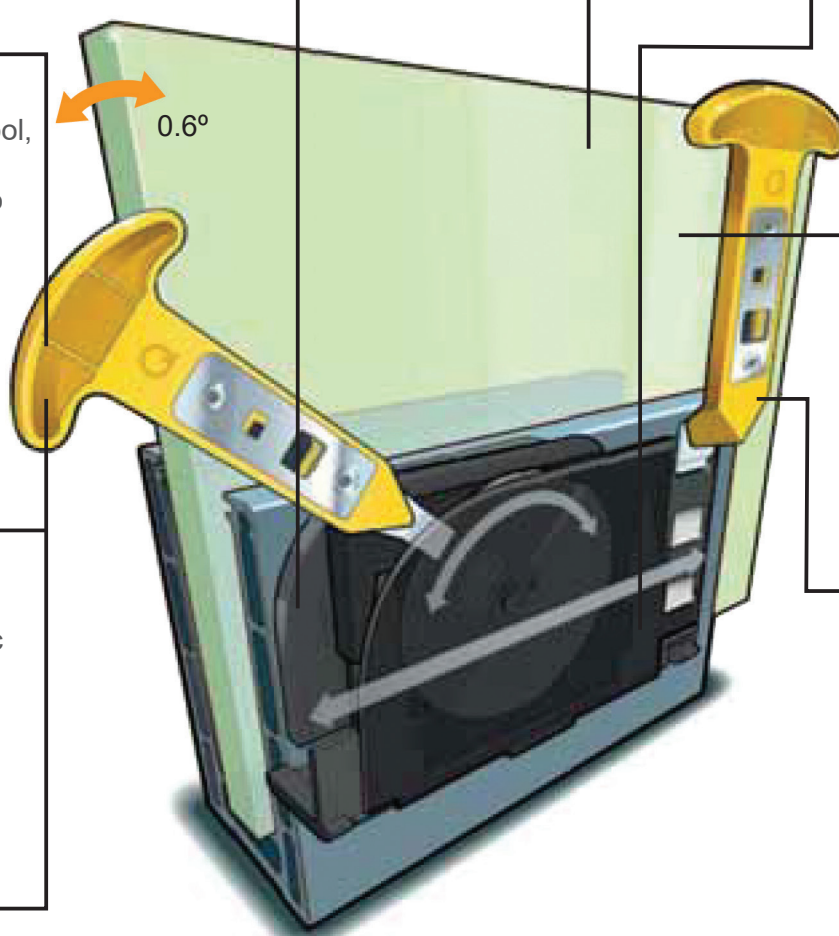
Insert the glass pane.

3

Insert the Q-disc between the glass and inlay until it clicks into place.

4

Using the Q-disc tool, hand tighten the Q-disc clockwise to secure glass.



5

Check if individual panes of glass need to be aligned

6

To adjust a disc, unscrew the Q-disc counter-clockwise.

7

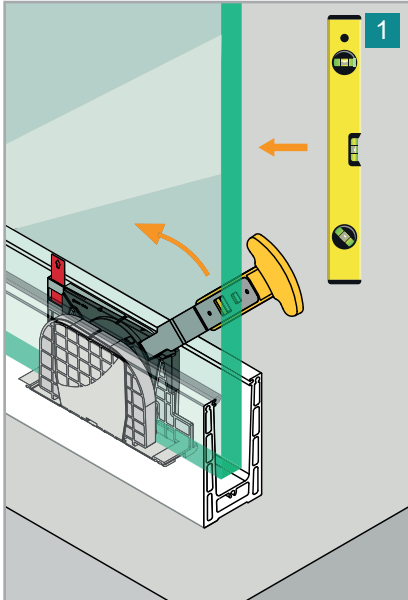
To adjust the tilt of the glass, use the Q-tool to move inlay left or right (optional).

8

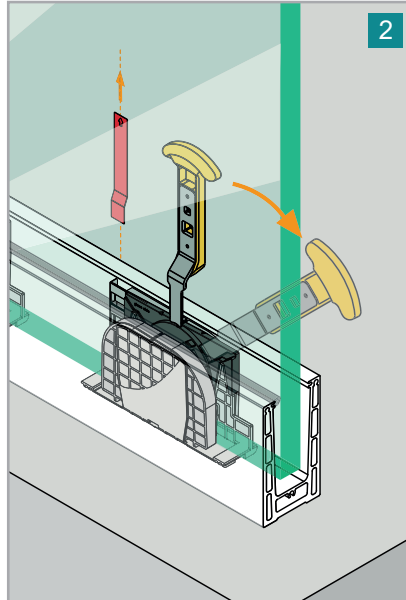
Fix the glass disc by tightening the Q-disc clockwise. Check instruction on page 3 for adjusting the torque wrench.

Q-Disc Set - Easy Glass Smart+ Balustrade

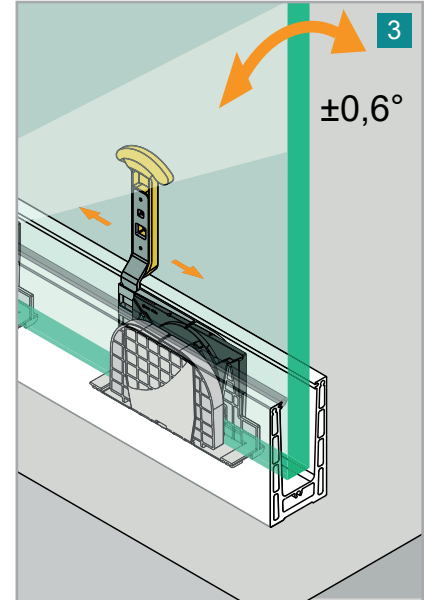
Glass Adjustment



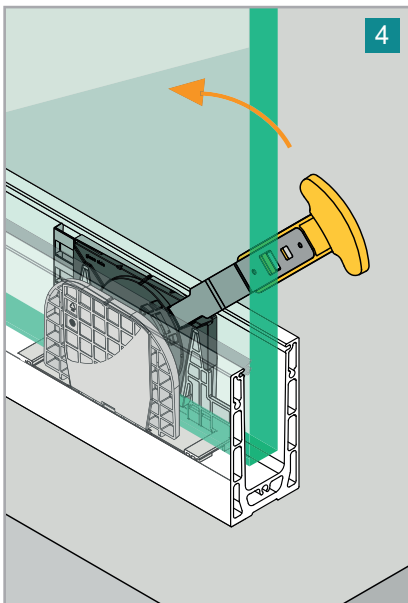
Check if individual panes of glass need to be aligned



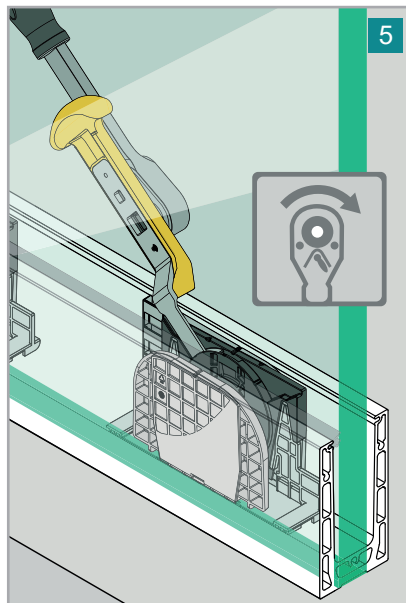
Loosen



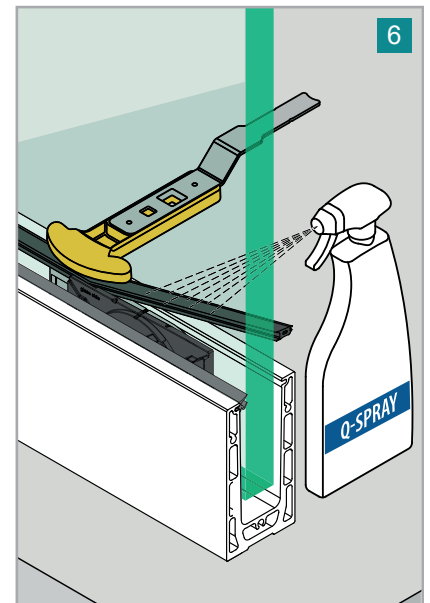
Align Glass



Tighten to secure glass



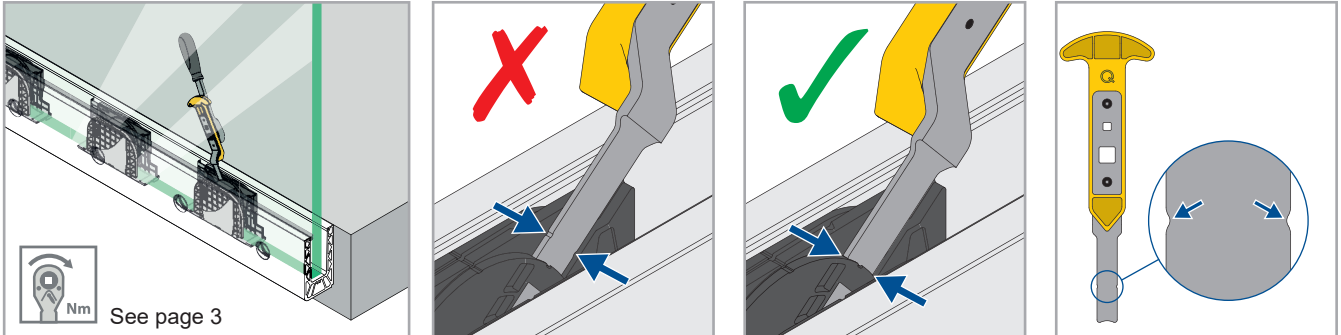
Check assembly instructions for setting the torque wrench (page 3)



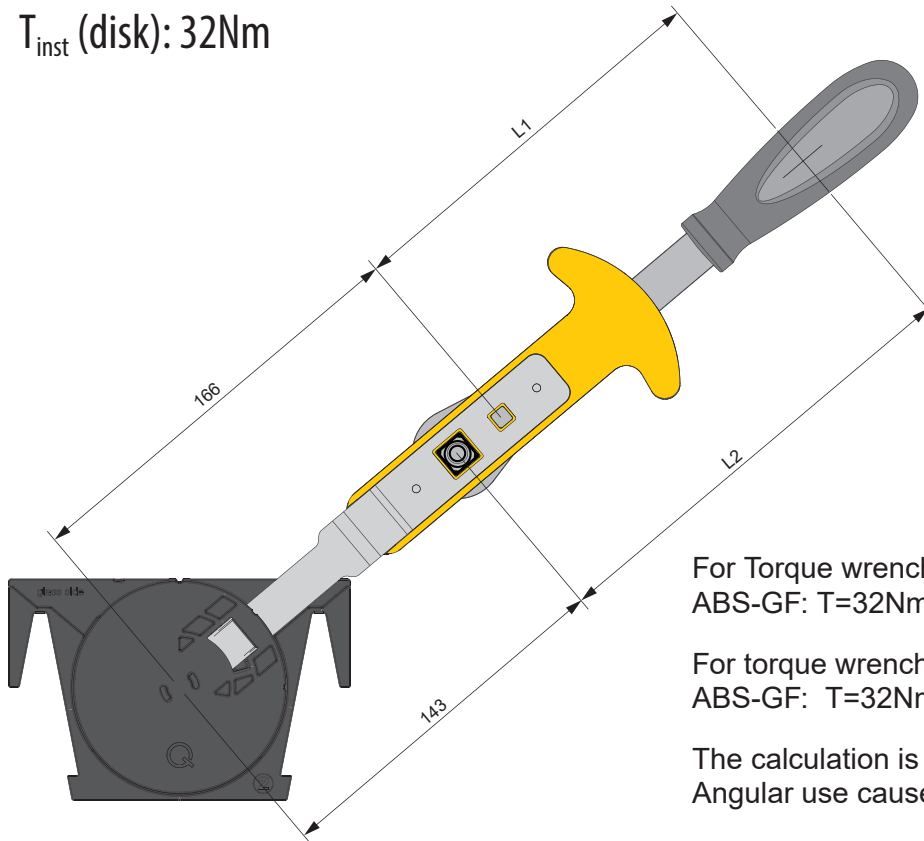
Clean

Q-Disc Set - Easy Glass Smart+ Balustrade

Q-disc and inlay tool



T_{inst} (disk): 32Nm



For Torque wrench 1/4":
ABS-GF: $T=32Nm \cdot L1 / (L1+166mm)$

For torque wrench 1/2"
ABS-GF: $T=32Nm \cdot L2 / (L2+143mm)$

The calculation is valid for straight-lined use.
Angular use causes different torque.