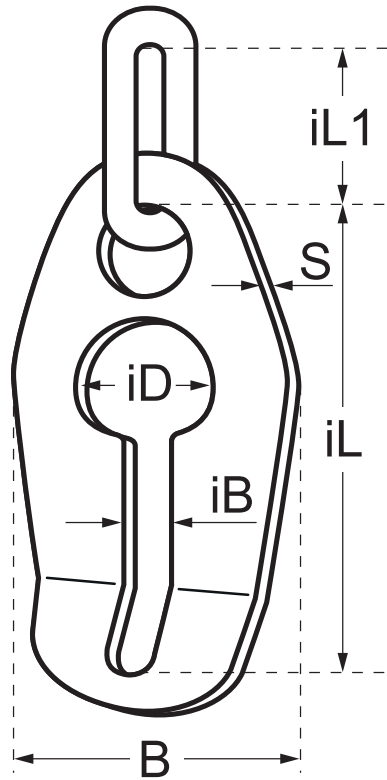


## Shortening Clutch - Duplex D6 Stainless Steel



**CARCANO** ITALY

**CARTEC60**



Code	Chain mm	iL (mm)	iL1 (mm)	B (mm)	iB (mm)	iD (mm)	S (mm)	*WLL (kg)	*Break Load (kg)
DX-SC-060	5-6	81	35	55	8	26	8.5	900	3600
DX-SC-080	7-8	110	44	71	11	34	10.5	1600	6400
DX-SC-100	10	135	54	90	12	40	13	2500	10,000
DX-SC-130	13	170	70	112	17	52	16.5	4250	17,000
DX-SC-160	16	202	85	135	20.5	64	20	6300	15,200

\*Break loads and working load specifications are only valid for correct axial single-line suspension without spreading.

Stainless Steel Duplex D6 - AISI 318LN construction.

Grade 60, Safety coefficient 4.

Manufactured in Italy by Carcano.