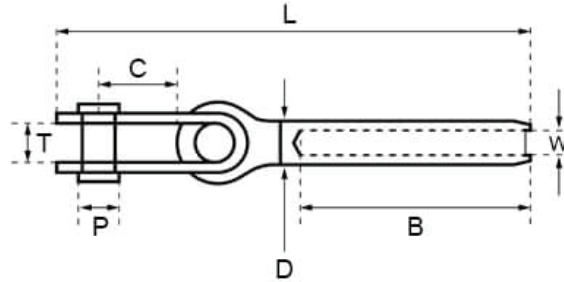


Swage Strap Toggle Fork - 316 Stainless Steel



Code	W (mm)	P (mm)	D (mm)	C (mm)	T (mm)	B (mm)	L (mm)
STF-030	3	6	6.3	14	8	39	84
STF-040	4	8	7.5	19	9	45	103
STF-050	5	9.5	9.1	21	11	52	111
STF-060	6	11	12.5	25	13	64	146
STF-070	7	12.7	14.3	26	15	70	168
STF-080-DS	8	12.7	16	26	15	80	169
STF-080	8	16	16	39.4	17.5	80	200
STF-100	10	16	18	38	19	100	212
STF-120	12	19	21.4	38	22	132	278
STF-140	14	22	25	52	25	156	328
STF-160	16	25	28.2	66	28	176	364
STF-190	19	28	34.5	68	32	210	430
STF-220	22	32	40.3	83	35	242	496
STF-260	26	35	45.9	97	38	290	571

A note about dimensional information

Please be aware that dimensions published on our site should be treated as indicative.

We publish dimensions to the best of our ability, however manufacturers can, from time to time, make small alterations to their designs.

If your dimensional criteria is critical please do contact us prior to making your purchase to let us know and we will do our best to fulfil your requirements.