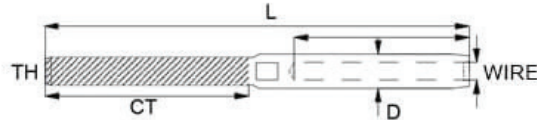


## Swage Stud - Metric Thread - 316 Stainless Steel



Code	Wire	TH	CT	L	D	
Right Hand	Left Hand	(mm)	(mm)	(mm)	(mm)	
SSM-030-M6	SSM-030-M6-L	3	M6	48	100	6.4
SSM-040-M6	SSM-040-M6-L	4	M6	48	110	7.5
SSM-040-M8	SSM-040-M8-L	4	M8	54	113 / 117 Right Left	7.5
SSM-050-M8	SSM-050-M8-L	5	M8	57	124	9
SSM-050-M10	SSM-050-M10-L	5	M10	63	130	9
SSM-060-M10	SSM-060-M10-L	6	M10	63	145	12.6
SSM-060-M12	SSM-060-M12-L	6	M12	80	162	12.6
SSM-080-M12	SSM-080-M12-L	7	M12	80	180	16
SSM-080-M16	SSM-080-M16-L	7	M16	100	200	16
SSM-100-M16	SSM-100-M16-L	10	M16	100	210	17.8
SSM-120-M20	SSM-120-M20-L	12	M20	120	245	20
SSM-140-M22	SSM-140-M22-L	14	M22	140	325	25
SMM-160-M27	SMM-160-M27-L	16	M27	160	371	28.2

A note about dimensional information

Please be aware that dimensions published on our site should be treated as indicative.

We publish dimensions to the best of our ability, however manufacturers can, from time to time, make small alterations to their designs.

If your dimensional criteria is critical please do contact us prior to making your purchase to let us know and we will do our best to fulfil your requirements.