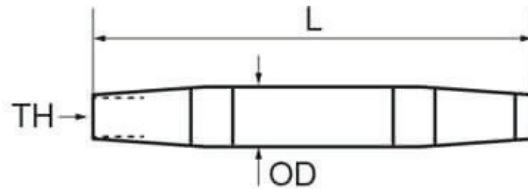


## Turnbuckle Body - Metric Thread



Code	TH (Metric)	L (mm)	OD (mm)
CB-M5	M5	80	8
CB-M6	M6	92	10
CB-M8	M8	112	13.5
CB-M10	M10	120	17.2
CB-M12	M12	150	21.3
CB-M14	M14	170	21.3
CB-M16	M16	190	26.9
CB-M20	M20	220	33.7
CB-M20-L	M20	240	40
CB-M22	M22	270	40
CB-M24	M24	325	50
CB-M30	M30	375	60
CB-M36	M36	410	65

A note about dimensional information

Please be aware that dimensions published on our site should be treated as indicative.

We publish dimensions to the best of our ability, however manufacturers can, from time to time, make small alterations to their designs.

If your dimensional criteria is critical please do contact us prior to making your purchase to let us know and we will do our best to fulfil your requirements.