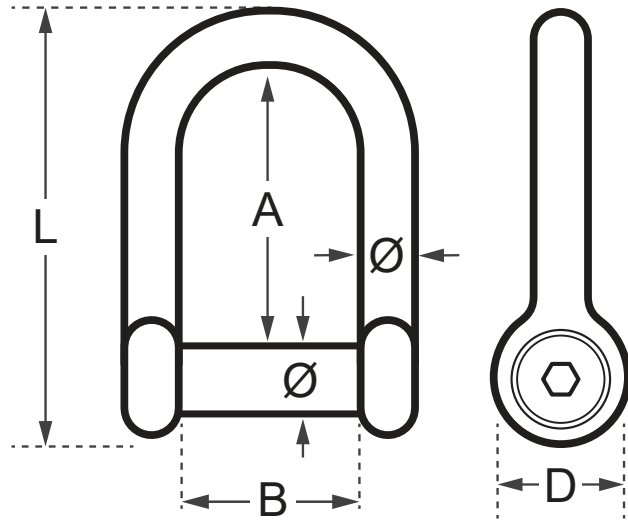


## Wichard D Shackle - Allen Head Pin



Code	Ø (mm)	L (mm)	A (mm)	B (mm)	D (mm)	Working Load (kg)	Break Load (kg)	Weight (kg)
WD-1303	6	34	19	12	12	600	1600	0.022
WD-1304	8	46	26	16	16	960	2700	0.053
WD-1305	10	57	33	20	20	1440	4300	0.099
WD-1306	12	73	39	24	24	2080	5500	0.187
WD-1363 (Wide)	6	58	42	25.5	14	320	1500	0.044

\* Working Load refers to nautical applications,  
 For lifting and industrial applications the working load limit (WLL) is 1/5 of the break load.

### A note about dimensional information

Please be aware that dimensions published on our site should be treated as indicative.

We publish dimensions to the best of our ability, however manufacturers can, from time to time, make small alterations to their designs.

If your dimensional criteria is critical please do contact us prior to making your purchase to let us know and we will do our best to fulfil your requirements.