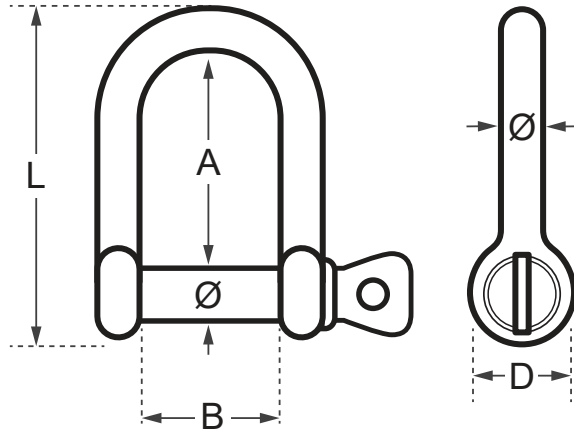


Wichard D Shackle - High Resistance Stainless Steel



Code	Ø (mm)	L (mm)	A (mm)	B (mm)	D (mm)	WLL (kg)	Working Load* (kg)	Break Load (kg)	Weight (kg)
WD-11203	6	35	20	12	13	460	1040	2300	0.024
WD-11204	8	46	26	16	16	820	1760	4100	0.052
WD-11205	10	59	33	20	19	1200	2640	6000	0.102
WD-11206	12	72	39	24	24	2000	3600	10000	0.192
WD-11207	14	82	49	28	28	2400	5120	12000	0.304
WD-11208	16	97	56	32	32	3800	6800	19000	0.464
WD-11209	20	121	70	40	40	5600	8800	28000	0.860

* Working Load refers to nautical applications.

Working Load Limit (WLL): for industrial applications only. WLL = 5:1 safety factor of the break load.

A note about dimensional information

Please be aware that dimensions published on our site should be treated as indicative.

We publish dimensions to the best of our ability, however manufacturers can, from time to time, make small alterations to their designs.

If your dimensional criteria is critical please do contact us prior to making your purchase to let us know and we will do our best to fulfil your requirements.