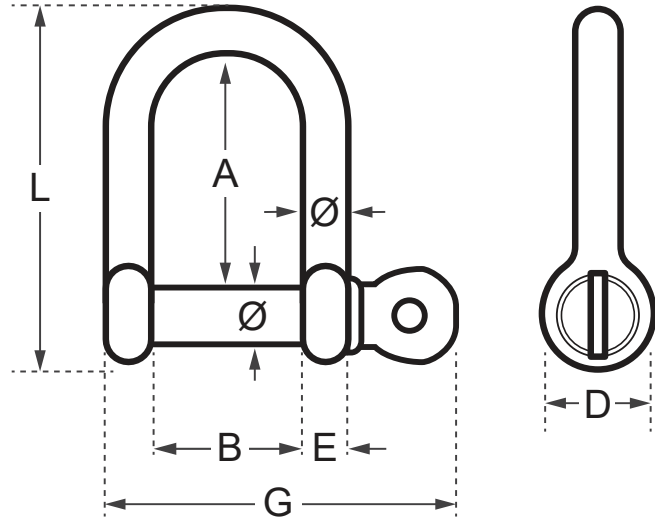


## Wichard D Shackle - Self Locking Pin



Code	Ø (mm)	L (mm)	A (mm)	B (mm)	D (mm)	E (mm)	G (mm)	WLL (kg)	Working Load* (kg)	Break Load (kg)	Weight (kg)
WD-1201	4	23	13	8	10	3	20	140	320	700	0.007
WD-1202	5	29	16	10	10	4	26	200	400	1000	0.013
WD-1203	6	34	20	12	12	5	31	320	600	1600	0.022
WD-1204	8	45	26	16	16	7	41	540	1000	2700	0.055
WD-1205	10	57	33	20	19	9	52	860	1520	4300	0.098
WD-1206	12	73	42	27	24	11	62	1200	2080	6000	0.193
WD-1207	14	82	47	28	28	13	78	1600	2400	8000	0.312

\* Working Load refers to nautical applications.

Working Load Limit (WLL): for industrial applications only. WLL = 5:1 safety factor of the break load.

### A note about dimensional information

Please be aware that dimensions published on our site should be treated as indicative.

We publish dimensions to the best of our ability, however manufacturers can, from time to time, make small alterations to their designs.

If your dimensional criteria is critical please do contact us prior to making your purchase to let us know and we will do our best to fulfil your requirements.