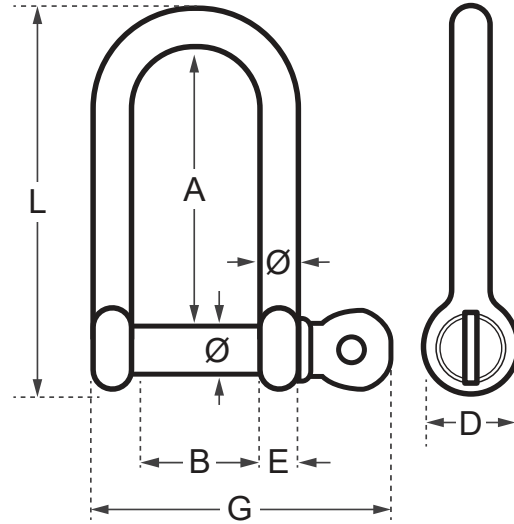
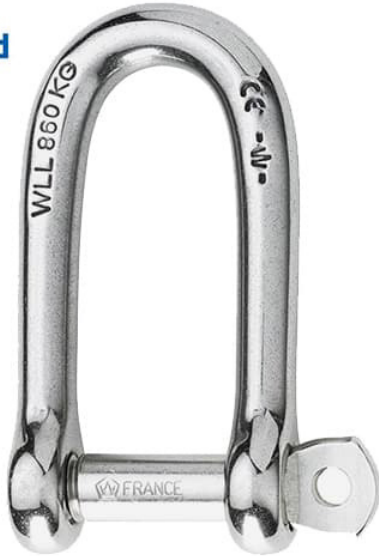


Wichard Long D Shackle - Self Locking Pin



Code	Ø (mm)	L (mm)	A (mm)	B (mm)	D (mm)	E (mm)	G (mm)	WLL (kg)	Working Load* (kg)	Break Load (kg)	Weight (kg)
WD-1211	4	32	22	8	8	4	21	140	320	700	0.008
WD-1212	5	41	29	10	10	4	26	200	400	1000	0.017
WD-1213	6	47	33	12	12	5	31	320	600	1600	0.027
WD-1214	8	64	45	16	16	7	41	540	1000	2700	0.068
WD-1215	10	79	55	20	19	9	52	860	1520	4300	0.128

* Working Load refers to nautical applications.

Working Load Limit (WLL): for industrial applications only. WLL = 5:1 safety factor of the break load.

A note about dimensional information

Please be aware that dimensions published on our site should be treated as indicative.

We publish dimensions to the best of our ability, however manufacturers can, from time to time, make small alterations to their designs.

If your dimensional criteria is critical please do contact us prior to making your purchase to let us know and we will do our best to fulfil your requirements.