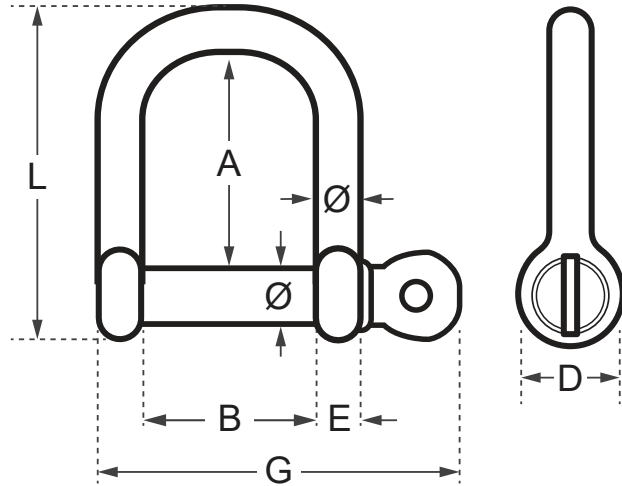


Wichard Wide Shackle - Self Locking Pin



Code	Ø (mm)	L (mm)	A (mm)	B (mm)	D (mm)	E (mm)	G (mm)	WLL (kg)	Working Load* (kg)	Break Load (kg)	Weight (kg)
WD-1262	5	48	36	20	11	5	35	220	330	1100	0.016
WD-1263	6	58	42	25.5	14	6	44	300	450	1500	0.027
WD-1264	8	77	57	32	17	8	57	540	810	2700	0.067
WD-1265	10	96	72	40	21	10	71	800	1280	4000	0.127

* Working Load refers to nautical applications.

Working Load Limit (WLL): for industrial applications only. WLL = 5:1 safety factor of the break load.

A note about dimensional information

Please be aware that dimensions published on our site should be treated as indicative.

We publish dimensions to the best of our ability, however manufacturers can, from time to time, make small alterations to their designs.

If your dimensional criteria is critical please do contact us prior to making your purchase to let us know and we will do our best to fulfil your requirements.